



A HIGHER STANDARD



www.primetimerv.com

CRUSADER



FIFTH WHEELS

CRUSADER

North America's
Favorite RV Company!



CRUSADER

Within us all, there's a calling to achieve ever-greater things; a search for a higher standard. In creating Crusader, we asked our engineers and design team to throw caution to the wind and engage in serious "outside the box" thinking. We challenged them to think beyond the status quo and reach for product innovations not currently offered. We said, "Make Crusader a new icon for the 21st century." Needless to say, they took the challenge to heart.

The result of their efforts represents a new standard in fifth wheels — A HIGHER STANDARD — Crusader.



Crusader 315RST

A HIGHER STANDARD



Crusader 337QBH Bedroom

Crusader 295RST Closet

Crusader is unlike any fifth wheel in its class. On the outside, our fifth wheel experts have combined advanced engineering and design with best-in-class features to create a fifth wheel that looks great, tows easily, and maximizes convenience. On the inside, Cherry hardwood cabinetry and solid surface kitchen countertops carefully work together to make a lasting impression. Your comfort and relaxation will be guaranteed with an abundance of upgrades such as high gloss champagne exterior, residential furniture and Ground Control Automatic Leveling System. Finally your long-term peace of mind is assured with Crusader's durable ETERNABOND® Construction, 50 AMP service and our custom 65 point pre-delivery inspection on 100 percent of our units.

A HIGHER STANDARD



Crusader 315RST Kitchen

A HIGHER STANDARD



Crusader 337QBH Kitchen

**A HIGHER
STANDARD
THAT WILL
IMPRESS AT
EVERY TURN**

Within seconds of entering, experienced RV'ers will recognize Crusader's subtle details of excellence, best-in-class features, and residential appointments.

Crusader's kitchens are by far the best in its class! We have designed our kitchens with large countertop preparation areas, enormous amounts of storage and large pantries. Crusader kitchens are appointed with many modern amenities such as LG Solid Surface countertops, stainless steel sinks, sprayer faucet and large storage drawers. Crusader kitchens are definitely built to a Higher Standard!

A HIGHER STANDARD



Crusader 315RST Bedroom

Crusader bedrooms are built for comfort and convenience. Every Crusader model features large 60" x 80" Ever Rest® select foam beds while several models come standard with a king bed. Crusader bedrooms feel spacious and roomy due to our tall ceilings, they have large storage closets, and our bedroom slide-out models come with the added convenience of washer and dryer preparation. Everywhere you look, there are numerous upgrades that will make your Crusader the envy of the campground.



Crusader 315RST Bedroom

TOP FEATURES



CRUSADER

A HIGHER STANDARD



PRIME TIME PROUDLY USES DEXTER AXLES

2 Year Warranty
DEXTER AXLE COMPANY

Your safety and peace-of-mind while traveling are assured with high quality, heavy duty Dexter Axles.



EZ FLEX SUSPENSION

2 Year Warranty
DEXTER AXLE COMPANY

The E-Z Flex technology virtually eliminates damage caused by vibration from rough road conditions. This will help protect your valuable investment.



SLEEK AND STYLISH FRAMELESS WINDOWS

Your Crusader will look fantastic with these deep tinted, DOT approved safety glass windows. The frameless design seals tight and prevents leaks.

LED Lighting



NEW cooler and more energy efficient.

LED INTERIOR LIGHTING

All Crusaders have LED interior lighting. Customers appreciate that Crusader's lights operate cooler and draw less electricity.



HIGH GLOSS FIBERGLASS

All Crusaders have High Gloss Gel Coated Fiberglass exteriors. The exteriors are uniquely designed to be easy on the eyes while traveling down the road.



STAINLESS STEEL SINK AND SPRAYER FAUCET

Crusader customers love the durability of the Stainless Steel Sink and the convenience of the pull down Sprayer Faucet.

ETERNABOND[®]

Bonded Aluminum Structure



ETERNABOND[®] CONSTRUCTION

Every wall, floor, and slide-out roof is made up of welded aluminum framework that is laminated together in order to build a stronger, longer lasting RV.



FLUSH MOUNT GLASS RANGE COVER

This great looking, easy-to-clean range cover sits flush to the neighboring countertop, maximizing your available work space.



* R-52 EXTREME THERMAL PACKAGE

R-52 Extreme Thermal Package provides superior protection from the outside elements, while keeping you cool in the summer and warm in the winter.

** R-Values calculated at 80° Ambient Temperature*



UNIVERSAL DOCKING CENTER

Crusader provides Best In Class convenience of having all your water connections, cable connections and outside shower in a lockable all-in-one, easy to use compartment.



GROUND CONTROL AUTO LEVELING SYSTEM

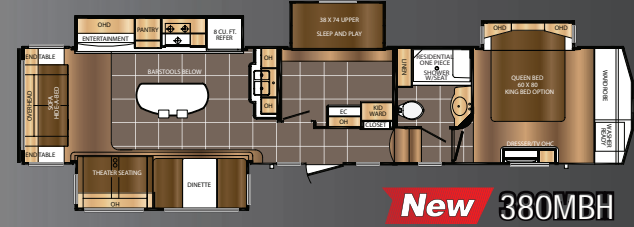
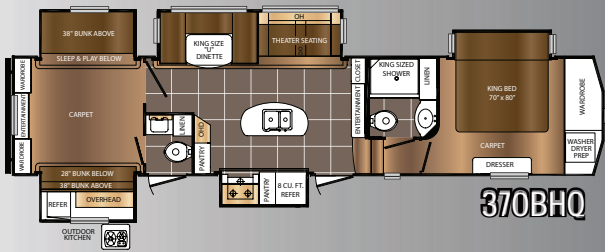
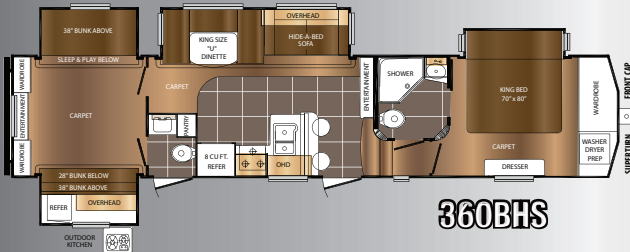
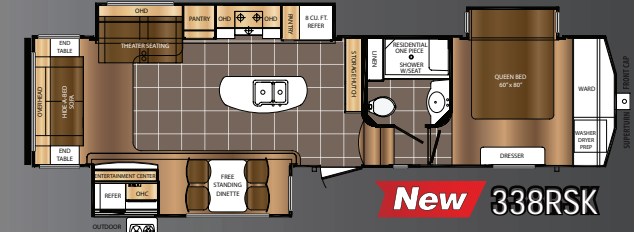
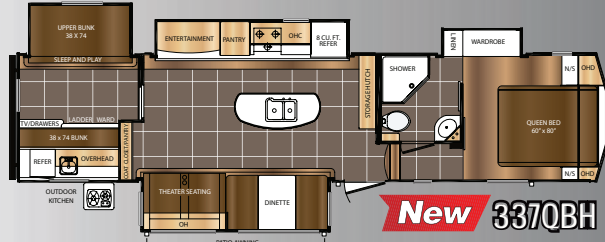
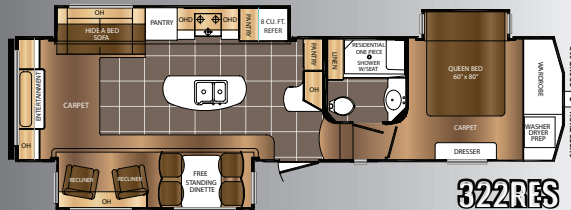
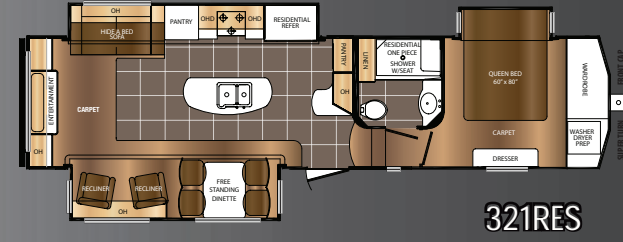
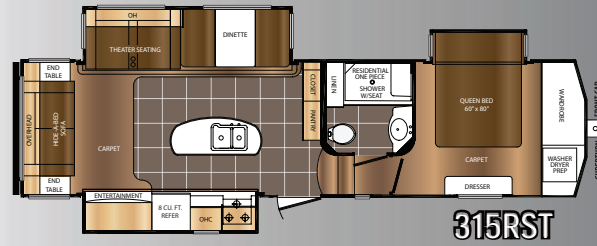
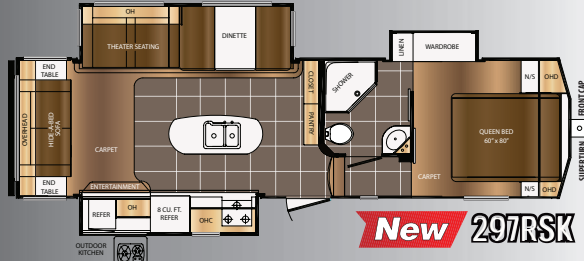
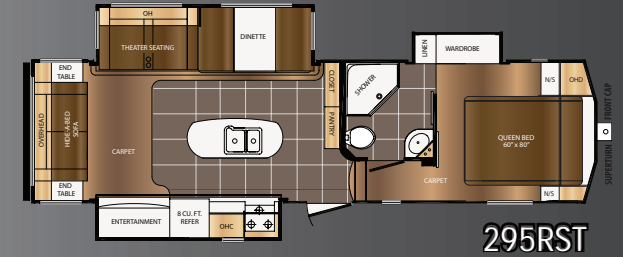
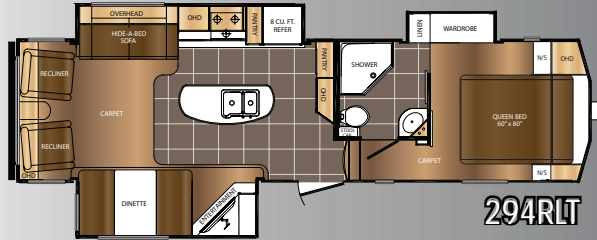
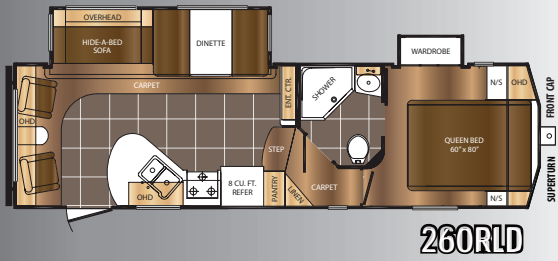
This one touch Auto Leveling System makes setting up your Crusader quick and easy!



"QUIET COOL" AIR CONDITIONER

Every Crusader is equipped with Dometic's premium "Quiet Cool" air conditioner. This air conditioner is 25% more efficient and 75% quieter than the competition.

CRUSADER - FLOORPLANS



SPECIFICATIONS	260RLD	294RLT	295RST	296BHS	297RSK	315RST	321RES	322RES	337QBH	338RSK	360BHS	370BHQ	380MBH
LENGTH	29' 11"	33' 0"	32' 7"	35' 4"	32' 7"	33' 11"	36' 3"	36' 3"	37' 9"	36' 6"	40' 5"	40' 5"	42' 4"
HEIGHT	11' 8"	11' 8"	11' 8"	11' 8"	11' 8"	12' 9"	12' 9"	12' 9"	12' 6"	12' 9"	13' 2"	13' 2"	13' 3"
HITCH WEIGHT	1,321 lb.	1,290 lb.	1,278 lb.	1,350 lb.	1,336 lb.	1,953 lb.	1,752 lb.	1,752 lb.	1,631 lb.	1,585 lb.	1,852 lb.	2,110 lb.	1,953 lb.
UNLOADED VEHICLE WEIGHT (UVW)	7,728 lb.	9,089 lb.	8,321 lb.	8,972 lb.	9,132 lb.	9,964 lb.	10,632 lb.	10,656 lb.	10,601 lb.	10,709 lb.	12,158 lb.	13,369 lb.	12,976 lb.
CARGO CARRYING CAPACITY (CCC)	2,393 lb.	2,361 lb.	3,117 lb.	2,538 lb.	2,364 lb.	2,389	3,096 lb.	3,096 lb.	1,430 lb.	2,876 lb.	1,694	2,741 lb.	2,977 lb.

UVW (Unloaded Vehicle Weight)* is the typical weight of the unit as manufactured at the factory. It includes all weight at the unit's axle(s) and tongue or pin and LP Gas. The UVW does not include cargo, fresh potable water, additional optional equipment or dealer installed accessories. *Estimated Average based on standard build optional equipment.

CCC (Cargo Carrying Capacity)** is the amount of weight available for fresh potable water, cargo, additional optional equipment and accessories. CCC is equal to GVWR minus UVW. Available CCC should accommodate fresh potable water (8.3 lbs per gallon). Before filling the fresh water tank, empty the black and gray tanks to provide for more cargo capacity. ** Estimated average based on standard build optional equipment.

See back page for additional specification definitions.

A HIGHER STANDARD

CRUSADER - STANDARDS & OPTIONS

CONSTRUCTION

- Gel Coated Fiberglass Exterior
- 5" Truss Rafters On 16" Centers with 3/8" WALK ON Decking
- Fiberglass Roof Insulation (R-14)
- One Piece TPO Roof With 12 Year Warranty
- Upgraded Water Line Fittings With 25 Year Warranty
- Easy Access Low Point Drain Switches
- Easy Access Fresh Water Drain Switches
- **Fresh Water Capacity - 60 Gallons**
- **Waste Water Capacity - 35 Gallons (360BHS, 370BHQ only - 70 Gallons)**
- **Gray Water Capacity - 70 Gallons**

EXTERIOR STANDARDS

- SUPER TURN® Aerodynamic Front Cap
- "E-Z LUBE" Greasable Axle Hubs
- Oversized Pass Thru Baggage Doors
- Extended Drip Spouts
- Black, Dark Tinted, Radius Safety Glass Windows
- 30# LP Bottles - Weight Distribution Design
- Quick Connect® Exterior LP Connection
- Outside Speakers
- Folding Grab Handle
- 30" Radius Entry Door
- Outside Shower With Detachable Hose
- Digital Compatible Roof Mounted Antenna
- Hi-Rise Triple Entry Step
- Outside Television Hook-Up
- 16" Aluminum Wheels And Tires

APPLIANCES/EQUIPMENT

- 15,000 BTU "Quiet Cool" Air Conditioner
- 35,000 BTU Hi Capacity Gas Furnace
- 3-Burner Range With Large Oven
- Range Hood With Light And Exhaust
- 8 Cubic Foot Double Door Refrigerator
- 6 Gal. Gas/Electric W/H With DSI
- 18 Gal./Hr. Quick Recovery Mode for Water Heater
- Simple Water Heater Bypass
- Hi Capacity Water Pump
- 12V Electrical System
- EZ Winterization Hook-Up
- Washer/Dryer Prep (*bed slide models*)

INTERIOR STANDARDS

- Solid Cherry Hardwood Cabinet Doors
- Solid Cherry Hardwood Drawer Fronts
- Solid Wood Core Cabinets
- Predrilled and Screwed Cabinetry
- Ball Bearing Extended Drawer Glides
- "Video Pro" Separate Cable/Satellite Prep
- Upgraded Residential Carpet
- Deep Overhead Cabinets in Slide Out (*where applicable*)
- Swivel Chairs (260 only)
- Large Panoramic Slide Room Windows
- Premium Vinyl Flooring
- Pleated Shades

KITCHEN

- LG Solid Surface Countertops
- Polished Nickel Fixtures & Hardware
- Deep, Double Bowl Stainless Steel Sink
- Sprayer Kitchen Faucet
- Residential Style Microwave
- Large Size Trash Can In Dedicated Area (*most models*)
- Oversized Pots N Pans Drawer (*most models*)
- Slide Out Pantry (*most models*)

BATHROOM

- King Size Shower (*most models*)
- Glass Shower Enclosure
- ABS Tub Surround
- Deluxe Skylight Over Tub
- Power Vent Fan
- Porcelain Toilet With Foot Flush
- STOR MOR® Shower Caddy
- Large Bathroom Sink
- Medicine Cabinet With Mirror

BEDROOM

- Dual Wardrobes (*most models*)
- Underbed Storage With Struts
- Residential Bedspread
- Bedroom Heat And A/C Vents
- Wired & Framed for 2nd Air Conditioner

SAFETY EQUIPMENT

- CO Detector
- LP Detector
- Fire Extinguisher
- Propane Alarm
- Smoke Alarm

"ADVANTAGE PACKAGE" (MANDATORY) **

- **ETERNABOND CONSTRUCTION** Featuring:
 - Laminated Aluminum Framed Side Walls (R-11)
 - Laminated Aluminum Framed End Walls (R-11)
 - Laminated Aluminum Framed Main Floor (R-14)
 - Laminated Aluminum Framed (R-14) Slide Out Walls And Roof
- Golden Cherry Cabinetry
- LG Solid Surface Countertops
- LG Solid Surface Sink Covers
- **Universal Docking Center (UDC) With:**
 - Cable & Satellite Hook-ups
 - Black Tank Flush
 - Battery Disconnect Switch
 - Spray Port With Hot & Cold Water
 - Coil Hose
 - Simple Water Heater By-Pass Switch
 - Simple Winterization Switch
 - Simple Winterization Draw Line
 - City Water Connection And Fresh Tank Gravity Fill
- **Thermal Package Plus** Featuring:
 - Enclosed And Heated Underbelly
 - Heated Holding Tanks
 - Enclosed Dump Valves
 - Heated Dump Valves
 - Zero Degree Extended Season Enjoyment
- Roof Ladder
- Spare Tire
- Residential Hide-A-Bed Sofa
- Residential Recliners (294,321,322,334,350,351 only)
- Detachable Power Cord
- Ever Rest Select Foam Mattress
- Dexter "E-Z Flex" Rubberized Suspension
- 1 Year Emergency Roadside Assistance Plan
- Leak Guard Assurance Process
- DVD And Surround Sound System
- Exterior Speakers
- Large LED TV
- One Touch Electric Awning
- 15,000 BTU "Quiet Cool" Premium Air Conditioning System
- 50 AMP Electrical System
- Prepped For Bedroom Air Conditioner

TOURING EDITION PACKAGE

- Extreme Thermal Package*
R-52 (roof, floor and behind cap)
- High Gloss Gel Coat Exterior
- Stainless Steel Sink & Sprayer Faucet
- Kitchen Power Vent
- Frameless Windows
- Electric Fireplace
- Ground Control 4 Point Auto Leveling
- LED Interior Lighting
- Flush Mount Stove Cover
- LED Lighted Awning

OPTIONS

- Free Standing Table With 4 Chairs
- 12 Cubic Foot Refrigerator (322, 338, 370 only)
- Champagne High Gloss Gel Coat Exterior (*mandatory*)
- Dual Pane Windows
- Theater Seating IPO Recliners (334 only)
- 2nd 13.5K "Quiet Cool" Air Conditioner With Dual Zone Control (315, 321, 322, 338, 360, 370, 380 only)

*R-Values Calculated at 80° Ambient Temperature

**Mandatory 1/1/2016

CRUSADER



A HIGHER STANDARD



29RS Living Area



28RL Kitchen



28RL Living Area

CRUSADER LITE



SPECIFICATIONS	27RK	28RL	29RS	30BH	34MB
LENGTH	31' 11"	31' 10"	31' 10"	33' 5"	38' 0"
HEIGHT	11' 6"	11' 6"	11' 6"	11' 6"	12' 0"
HITCH WEIGHT	1,142 lb.	1,322 lb.	1,237 lb.	1,162 lb.	1,482 lb.
UNLOADED VEHICLE WEIGHT (UVW)	8,111 lb.	8,162 lb.	8,163 lb.	8,470 lb.	10,297 lb.
CARGO CARRYING CAPACITY (CCC)	1,831 lb.	1,960 lb.	1,874 lb.	1,492 lb.	3,185 lb.

UVW (Unloaded Vehicle Weight)* is the typical weight of the unit as manufactured at the factory. It includes all weight at the unit's axle(s) and tongue or pin and LP Gas. The UVW does not include cargo, fresh potable water, additional optional equipment or dealer installed accessories. *Estimated Average based on standard build optional equipment.

CCC (Cargo Carrying Capacity)** is the amount of weight available for fresh potable water, cargo, additional optional equipment and accessories. CCC is equal to GVWR minus UVW. Available CCC should accommodate fresh potable water (8.3 lbs per gallon). Before filling the fresh water tank, empty the black and gray tanks to provide for more cargo capacity. ** Estimated average based on standard build optional equipment.

See back page for additional specification definitions.



29RS Bedroom

A HIGHER STANDARD

CRUSADER LITE – FLOORPLANS, STANDARDS & OPTIONS

CONSTRUCTION

- Champagne High Gloss Gel Coated Fiberglass Exterior
- 5" Truss Rafters On 16" Centers With 3/8" WALK ON Decking
- Fiberglass Roof Insulation (R-14)
- One Piece TPO Roof With 12 Year Warranty
- Upgraded Water Line Fittings With 25 Year Warranty
- Easy Access Low Point Drains
- Easy Access Fresh Water Drain
- Fresh Water Capacity - 60 Gallons
- Waste Water Capacity - 35 Gallons (30BH only - 70 Gallons)
- Gray Water Capacity - 35 Gallons

EXTERIOR STANDARDS

- SUPER TURN® Aerodynamic Front Cap
- "E-Z LUBE" Axle Hubs
- Oversized Pass Thru Baggage Doors
- Extended Drip Spouts
- Black, Dark Tinted, Radius Safety Glass Windows
- 30lb. LP Bottles - Weight Distribution Design
- Outside Speakers
- Folding Grab Handle
- 30" Radius Entry Door
- Outside Shower with Detachable Hose
- Digital Compatible Roof Mounted Antenna
- Electric Awning
- LED Awning Light

- Hi-Rise Triple Entry Step
- Outside Television Hook-Up
- 15" Wheels And Tires

INTERIOR STANDARDS

- Solid Cherry Hardwood Cabinet Door Frames
- Solid Wood Core Cabinets
- Predrilled And Screwed Cabinetry
- Ball Bearing Extended Drawer Glides
- "Video Pro" Separate Cable / Satellite Prep
- Upgraded Residential Carpet
- Deep Overhead Cabinets In Slide Out (where applicable)
- Recliners (where applicable)
- Large Panoramic Slide Room Windows
- Premium Vinyl Flooring
- Pleated Shades

APPLIANCES/EQUIPMENT

- 15,000 BTU Air Conditioner
- Hi Capacity Gas Furnace
- 3-Burner Range With Large Oven
- Range Hood With Light And Exhaust
- Double Door Refrigerator
- 6 Gal Gas/Electric W/H With DSI
- 18 Gal/Hr Quick Recovery Mode for Water Heater
- Hi Capacity Water Pump
- 12V Electrical System
- Simple Winterization Switches
- Simple Water Heater By-Pass Switch

- Polished Nickel Fixtures And Hardware
- Deep, Double Bowl Kitchen Sink
- Hi Rise Metal Kitchen Faucet
- Residential Style Microwave
- Large Pots N Pans Drawer
- Sink Cover

BATHROOM

- Residential Size Shower With Glass Doors
- ABS Tub Surround
- Deluxe Skyview® Skylight Over Tub
- Power Vent Fan
- Large Bathroom Sink
- Medicine Cabinet With Mirror

BEDROOM

- Large Wardrobe Closet And Drawers
- Underbed Storage With Struts
- Residential Bedspread
- Bedroom Heat And A/C Vents
- Two Nightstands

SAFETY EQUIPMENT

- CO Detector
- LP Detector
- Fire Extinguisher
- Propane Alarm
- Smoke Alarm

ADVANTAGE PACKAGE

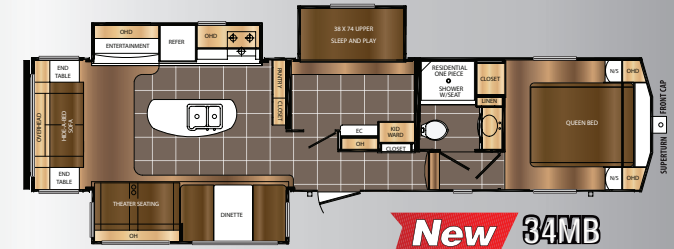
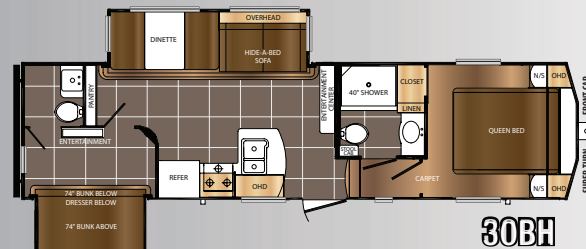
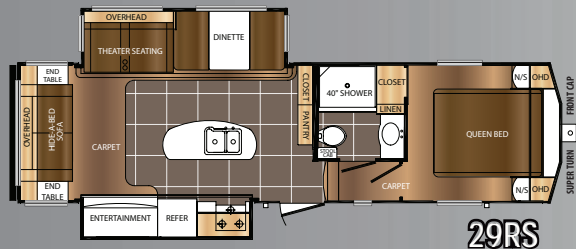
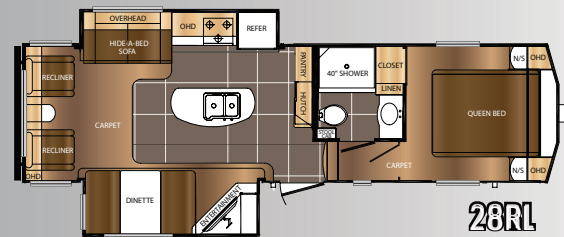
- **ETERNABOND CONSTRUCTION** Featuring:
 - Laminated Aluminum Framed Side Walls (R-11)
 - Laminated Aluminum Framed End Walls (R-11)
 - Laminated Aluminum Framed Main Floor (R-14)
 - Laminated Aluminum Framed Slideout Walls and Roof
- **Universal Docking Center (UDC)** Featuring:
 - Cable And Satellite Hook-ups
 - Black Tank Flush
 - Battery Disconnect Switch
 - Spray Port With Hot And Cold water Coil Hose
- Simple Water Heater By-Pass Switch
- Simple Winterization Switch
- Simple Winterization Draw Line
- City Water Connection And Fresh Tank Gravity Fill
- **Thermal Package Plus** Featuring:
 - Enclosed And Heated Underbelly
 - Heated Holding Tanks
 - Enclosed Dump Valves
 - Heated Dump Valves
- Extended Season Enjoyment
- Roof Ladder
- Spare Tire
- Residential Hide-A-Bed Sofa
- Residential Recliners (28RL only)
- Detachable Power Cord
- Evergreen Mattress
- 1-Year Emergency Roadside Assistance Plan
- Leak Guard Assurance Process
- Home Theater Soundbar and DVD Player
- 40" LED TV
- One Touch Electric Awning with LED Lights
- 15,000 BTU Air Conditioning System
- 30 Amp Electrical Service

OPTIONS

- Free-Standing Dinette Table And 4 Chairs
- 50-AMP Service, Wire and Frame for Second A/C

**Mandatory 1/1/2016

KITCHEN



DSI QUALITY CIRCLE AWARD WINNER - 2010, 2011, 2012, 2013, 2014, 2015

Prime Time Manufacturing is proud to be recognized as an industry leader in value, reliability, and overall quality by the Recreational Vehicle Dealers Association. This was accomplished by committing ourselves to "A Higher Standard" in design, construction, testing, and customer service. Check us out – we know you'll be impressed!



Seal Tech Air Pressure Test



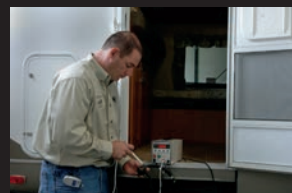
ETERNABOND®
Construction



Rain Bay



Seek-A-Leak Pressure Test



65 Point Secondary PD



Web Based
Customer Service



Executive Quality Audits



Advanced Engineering

ADDITIONAL SPECIFICATIONS:

GAWR (Gross Axle Weight Rating) is the maximum permissible weight, including cargo, fluids, optional equipment and accessories that can be safely supported by a combination of all axles.

Each Forest River RV is weighed at the manufacturing facility prior to shipping. A label identifying the unloaded vehicle weight of the actual unit and the cargo carrying capacity is applied to every Forest River RV prior to leaving our facilities. The load capacity of your unit is designated by weight, not by volume, so you cannot necessarily use all available space when loading your unit.



www.primetimerv.com
PO Box 330 • 55470 CR 1 • Elkhart, IN 46515



HERE'S JUST A SAMPLE OF THE BENEFITS*

- Mobile Mechanic
- Free Jump Starts
- Tire Changes
- \$2000 Trip Interruption
- Appointment Assistance
- Lock Out Service
- Fuel Delivery
- Service Assistance
- Custom Trip Routing and Maps
- 24 Hour Emergency Messaging

*Exclusions and restrictions apply. See member guide for details.

24/7 EMERGENCY ROADSIDE ASSISTANCE

For a worry-free ownership experience Forest River includes one year of Coach-Net RV Technical & Roadside Assistance with each RV purchase. Whether new to the RV lifestyle or an experienced RV enthusiast, Forest River owners have 24/7 access to technical, operational and emergency road service coverage throughout the US & Canada. Coach-Net's fast, dependable service is just a phone call away.

Coach-Net®
RV Technical & Roadside Assistance

**FROG™ the Forest
River Owners' Group!**

FREE MEMBERSHIP
to Forest River Owners' Group

www.forestriverfrog.com



Forest River, Inc. encourages our customers to purchase their Forest River products whenever possible from a local dealership for the following reasons:

- 1) Forest River, Inc. dealers are independently owned and operated businesses so priority service and scheduling is at their discretion and is often provided to customers that purchased their unit at that dealership.
- 2) Purchasing locally allows customers to establish meaningful relationships with a dealer, enhancing the RV experience through assistance with product questions, user tips or RV regulations for your state or country, and much more!
- 3) Canadian customers must meet requirements to bring an RV purchased out of the country to their home. These requirements may involve additional inspections and certifications, taxes and fees. Your local Canadian Dealer is a professional at meeting these requirements.
- 4) Scheduling timely warranty repairs and adjustments through a local dealership provides far greater flexibility and convenience to you, the customer!

It is the goal of Forest River, Inc. that all of our RV owners fully enjoy the RV experience and that customer satisfaction meets or exceeds their expectations!

All information contained in this brochure is believed to be accurate at the time of publication. However, during the model year, it may be necessary to make revisions and Forest River, Inc., reserves the right to make all such changes without notice, including prices, colors, materials, equipment and specifications as well as the addition of new models and the discontinuance of models shown in this brochure. Therefore, please consult with your Forest River, Inc., dealer and confirm the existence of any materials, design or specifications that are material to your purchase decision.

©2015 Prime Time Manufacturing
A Division Of Forest River, Inc.,
A Berkshire Hathaway Company.
All Rights Reserved



Learn More
Scan this barcode using a QR Reader on your smart phone to learn more about Forest River.



A Berkshire Hathaway company.

DEALER