

CEDAR CREEK

CEDAR CREEK EXTENDED STAY FIFTH WHEELS



THE SMART CHOICE FOR THE EXPERIENCED RV'ER

THE SMART CHOICE

Experienced RV'ers know what they want. With over 23 years in the RV industry, Cedar Creek is truly considered one of the best built products in the marketplace. Enjoying the outdoor experience is what RVing is all about. We're dedicated to building better quality recreational vehicles...that's why many of our owners are enjoying their second and third units. See for yourself why Cedar Creek is the smart choice for the experienced RV'er.

THE SMART CHOICE FOR THE EXPERIENCED RV'ER



360RL



CEDAR CREEK

THE ADVANTAGE

Cedar Creek extended stay fifth wheels deliver the comforts and conveniences of home while on the road. Spacious floorplans, name brand appliances and furniture, plus residential construction provide the reliability experienced RV enthusiasts expect from Cedar Creek. Wherever you travel, whether full-timing or weekendng, Cedar Creek enhances peace of mind for life's great adventures.



RESIDENTIAL INTERIOR FEATURES INCLUDE:

- Ashley Grey Cabinetry
- Congoleum Flooring
- Shaw Carpeting
- Safe Night Accent Lighting
- Power Theater Seating with USB Ports
- Hide-a-Bed Sofa (some models)
- Residential Appliances
- 50" TV with Swing Arm
- Solid Surface Counter Tops
- Stainless Steel Under Mounted Sinks
- One-piece Back Splash
- Self-Closing Drawer Guides
- Hidden Hinges
- Dimmer Switches Throughout Including Slides
- Day / Blackout Roller Shades
- One-piece Residential Shower
- Porcelain Toilet
- Residential King Mattress
- Flip-top Dresser Storage
- 32" TV in the Bedroom
- Washer / Dryer Prep that allows side-by-side installation
- King Campground WiFi Extender
- Whisper Quiet Air Conditioners in the Living Room and Bedroom



388RK2



Clean, Simple Interfaces

This coach is powered by Firefly Integrations with advanced electrical automation.

Firefly specializes in developing simple interfaces for total system control.



FIREFLY
INTEGRATIONS

Imagination • Innovation • Integration
www.fireflyint.com

This unique 388RK2 split-level floorplan includes a large rear kitchen, a spacious private master bathroom and dresser with hidden storage upstairs, plus a second half bath/laundry room on the lower level. A desk in the living room provides a comfortable space for work on the road. Shown with a 20 cu. ft. electric refrigerator with icemaker.





371FL

**EXCELLENT STORAGE –
INSIDE AND OUT**

An exterior hide-a-way garage offers three times more cargo capacity than most fifth wheels.

This front living, bath and a half floor plan features a raised master bedroom, private master bath and stacked washer/dryer closet. Shown in Linen decor.



371FL



CEDAR CREEK



A



B



C



D



E



F



G



H



I



J



K

ADDED CONVENIENCES

- A. Stainless steel dishwasher is optional on select models.
- B. Free-standing four burner 24" gas range
- C. Double waste basket cabinet
- D. Clean up is quick and easy with stainless steel undermount sinks and this single handle, pull-out faucet with sprayer.
- E. Day shade and blackout roller shades are standard in all living areas.
- F. Optional side-by-side washer and dryer installation
- G. Our freestanding table comes standard with a large leaf extension, and four chairs, (two residential and two folding).
- H. Standard 20 cu. ft. residential stainless steel electric refrigerator with ice-maker and dedicated inverter
- I. Optional 18 cu. ft. stainless steel gas/electric refrigerator
- J. Full-size pantry with full extension pull-out drawers shelves, and 110V plug inside the cabinet
- K. All entertainment centers include a 50" TV, 12V AM/FM DVD player with waterproof exterior speakers, USB port and Bluetooth connectivity.
- L. The standard KING WiFiMAX router/range extender can be configured to connect to available networks and devices with password access.
- M. Cedar Creek fifth wheels are prewired for an optional Furrion rear camera or 4 camera security system.
- N. Heated front storage compartment provides over 100 cu. ft. of storage and includes an extra vacuum port for outside clean-ups.
- O. MorRyde "Step Above" 5-tier entry step provides secure footing as you enter our extra wide 32" entry door.

KING



OUTDOOR PARTY CENTER

This party slide is only 20" wide, and tucks nicely into most fifth wheel front storage compartments. It packs a whopping punch with a 50" hidden TV on a double lift, a fold-up countertop with hidden storage, 110V mini refrigerator, and a Suburban gas griddle on a steel slide out tray.



Power awning with LED night lighting.



L

M

N

O



STATE-OF-THE-ART CONSTRUCTION



Cedar Creek's famous all Aluminum Superstructure 16" on centers or less, allows our frame to sit on top of the floor



100% Aluminum framed windows and baggage doors

Go Power Solar equipped

"True" High Gloss Classic™ gelcoat exteriors



High-Performance Quiet Zone™ Ducted Air System with two HP air conditioners, full 7" wide ductwork, a residential-style return air duct system and Comfort Control Center.



Hehr automotive frameless windows



Heating pads on all tanks

Dexter® Safety and Performance Package

TST Tire Pressure Monitoring System

Cold water port



R-38 Radiant shield Therma-foil wrap through ceilings, underbellies and under front cap



Residential Glasswool Insulation, designed by nature.

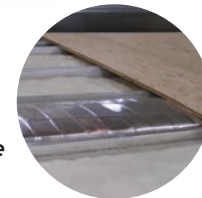


Water lines are insulated within the floor substrate, not below the floor.

Z-Frame, heated front storage compartment with Diamond tread floor and vacuum port

Standard Level-Up 6-point Hydraulic Leveling System

3" Aluminum floor studs, heat duct and 5/8" tongue and groove plywood floor.



CONSTRUCTED FOR YEARS OF CAREFREE CAMPING

Cedar Creek is especially designed for living life on the road. Our strength comes from handmade 16" on center (or less), residential frame construction. "True" gelcoat exteriors and Silaprene adhesives provide outstanding resistance to UV, heat, cold, moisture, oils, gasoline and highway chemicals. This resilient bond grows stronger over time, and is why experienced RV'ers prefer Cedar Creek over laminated products – often returning for their second and third units. Cedar Creek is designed with serviceability in mind with removeable 4' x 6' ABS panels, 5/8" tongue and groove plywood floors, enclosed water lines and 12V heating pads on all tanks that allow for comfortable, extended camping in all seasons and years of worry free adventure.

CEDAR CREEK



Cold room tested to 0°F with standard insulation and heating pads that allow all season camping.



SIDEWALLS



FLOORS



CEILING

INDUSTRY LEADING TIRE PRESSURE MONITORING SYSTEM

Monitor your tires from the Driver's seat. Real time tire temperature and pressure readings are transmitted directly to our display. The system alerts you in the event of a tire puncture or other gradual pressure loss, sudden tire temperature increase, or rapid deflation of the tires. Increased awareness brings increased safety, tire life and fuel economy.



RV POWER SOLUTIONS

Cedar Creek models are all standard equipped with the Go Power Solar roof panel system. Unplug and go off grid. Charge your batteries anywhere the sun is shining.



Go Power!



SUPERIOR PERFORMANCE

*Dexter® Axles/Brakes
Suspension For Performance
and Safety*

- Nev-R-Adjust® Brakes are always properly adjusted for improved stopping power in half the distance
- Heavy Duty Axles with E-Z Lube™ Hubs
- 16" Eight lug, ST, "G" rated, 14 ply tires on 7000 lb. Dexter® Axles
- "H" rated, 16 ply tires on 8000 lb. Dexter® Axles



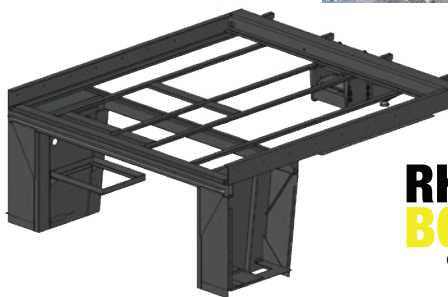
TANDEM AXLE KIT

These shock absorbing equalizers dampen road shock and vibrations transferred from both the leading and trailing trailer axle leaf springs, a full 360° of protection.

- Automotive grade castings on all fasteners
- Provides the ride quality of a torsion axle
- Includes greaseable bronze bushings
- Easy aftermarket upgrade

NEXT GENERATION UPPER DECK

Rhino Box upper deck chassis innovation and pin box design allows for additional floor space and a more robust front beam.



RHINO BOX
© 2014

INTERACTIVE MOBILE MANUALS

Download our Cedar Creek mobile app or visit our dynamic online manual to enhance your ownership experience. These interactive options provide incredible ease and insight into use, maintenance and enjoyment of your Cedar Creek product. Ranging from "How-To" videos, pictures and illustrations of various components, systems and features, to fully searchable content and downloadable PDFs for individual component owner's manuals, answers are always just a click away. View the online manual at www.forestriverinc.com/cedarcreek/ownersmanuals, or download our FREE app from the App Store or Google Play!

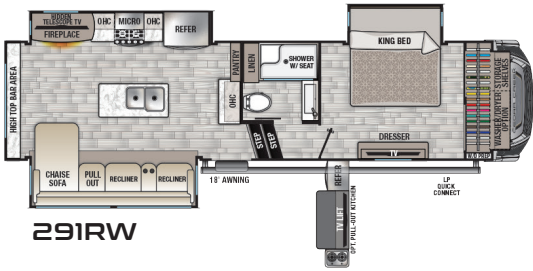


View our construction video or read our back to basics construction booklet to learn more at www.forestriverinc.com/cedarcreek

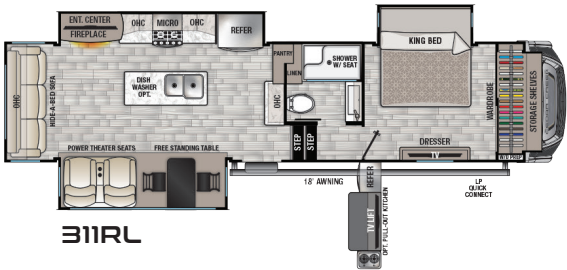


CEDAR CREEK FLOORPLANS

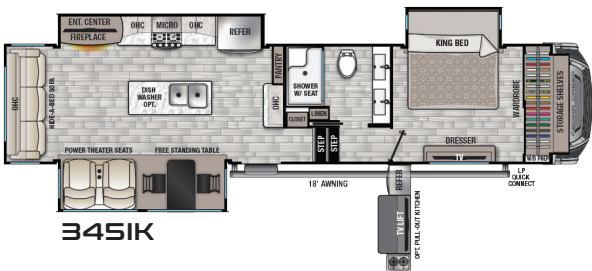
Check out the Optional Cedar Creek Party Center shown on page 7.



291RW



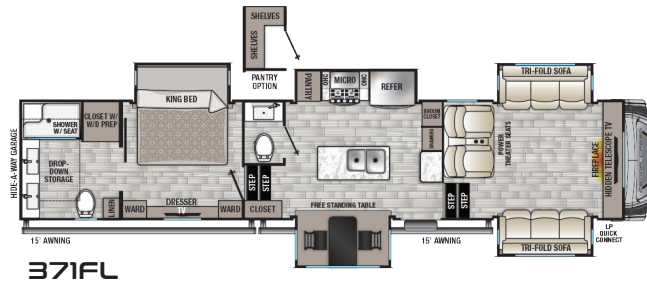
311RL



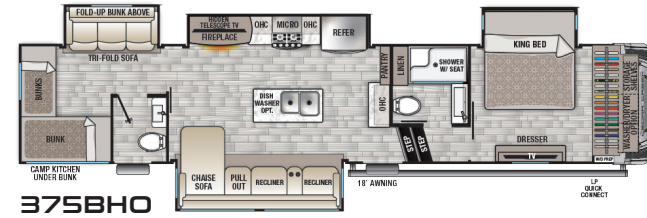
345IK



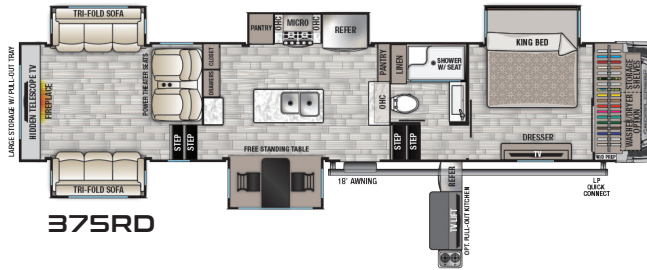
360RL



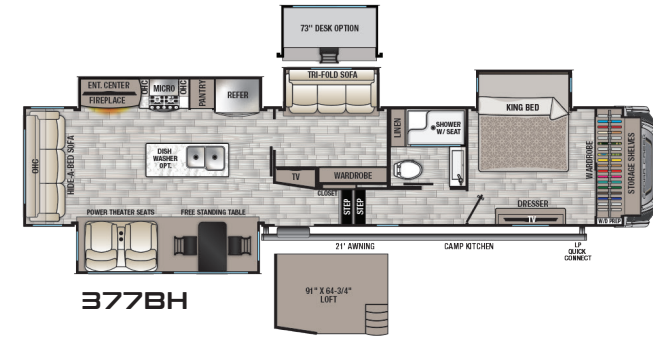
371FL



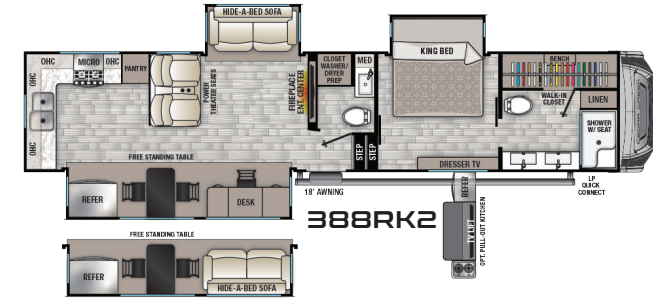
375BHO



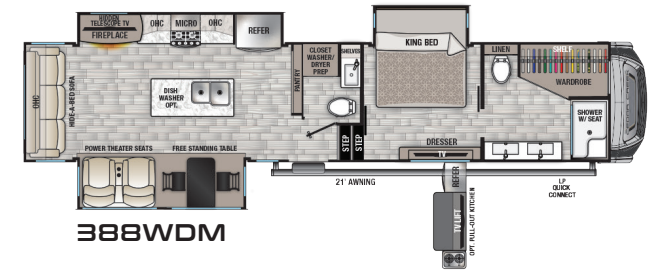
375RD



377BH



388RK2



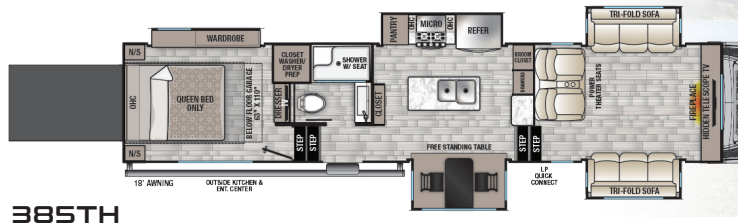
388WDM



PACK FOR ADVENTURE

Cedar Creek's **385TH** features a spacious rear garage that offers plenty of room for gear and toys. Stay outside where the action is with a convenient outdoor refrigerator and 32"

television. When the garage is fully extended it measures 110" D x 61" W x 84" H.



385TH



ADVANTAGE PACKAGE

(Mandatory Features)

- Cedar Creek's Famous All Aluminum Superstructure – 16" on Centers or Less
- "True" High Gloss Gelcoat Exterior (The Best of the Best in Exteriors)
- Solid Surface Countertops with Stainless Steel Under-mounted Sinks
- Animal Leash Latch
- Tire Pressure Monitoring System
- 2" Bike Rack Receiver
- Free Standing 24" Gas Range
- Day/Night Shades
- Automatic 6-Point Hydraulic Leveling System
- Quick Disconnect Exterior LP Gas Connection
- 20 Cu. Ft. Stainless Steel Electric Refrigerator with Ice Maker and Dedicated 1000W Inverter
- Heated Storage Compartment with Diamond Tread Flooring

CONVENIENCE PACKAGE

- True Gelcoat, Painted, Front Cap
- Extra Wide 32" Entry Door with a Friction Hinge
- 5-Tier MorRyde® Easy-Steps™
- 12 Gallon LP/110V Hot Water Heater with Bypass Kit
- (2) High Performance (HP) Ducted Air Conditioners with Dual Zone Control and Cold Air Returns
- King WiFi Router/Range Extender
- 50" Flat Screen Television with Swing Arm
- Power Theater Seating with USB charging ports
- Variable Speed, Power Fan with Rain Sensor Override in Kitchen
- Slam Latch Baggage Doors with Magnetic Catches
- USB Ports Throughout
- Prepped for an Optional Washer and Dryer
- Full Extension Drawer Glides with Self-closing Drawers
- Total Unit Control with Vegatouch Panel and Firefly Dimmer Switches that Include Wireless Connectivity to Your Phone
- Intervac Central Vacuum System with Front Storage Compartment Port and Interior Automatic Dustpan

STANDARD FEATURES

EXTERIOR

- Silaprene® Bonded Sidewalls – resilient, with outstanding resistance to UV, heat, cold, moisture, oils, gasoline, highway chemicals. Creates a bond that grows stronger with age and resists delamination.
- 21,000 Lb. Rhino Box Hitch
- Dexter Performance Safety Package - Heavy Duty Axles with E-Z Lube™ Hubs
- Trailair Road Armor Tandem Axle Kit with Bronze Bushings
- Z-frame with Metal Wrapped Skirting to the Frame
- Frameless, Tinted Automotive Style Windows
- Lionhead Special Trailer (ST) Tires with "No Excuses" One Year Guarantee!
- 4' x 6' ABS, Ribbed, Removable Underbelly Panels



- Full, Walk-on Roof with Tufflex PVC Roof Vinyl
- 12V Heating Pads on All Black, Grey, and Fresh Water Tanks
- Black Electric Awning with Upgraded Fabric and LED Night Lights
- Full Docking Station with Multi-function Tank Levers, Outside Shower, Black Tank Flush, 12V Battery Disconnect
- Door Side, Cold Water Port
- 50 Amp Power Cord Reel
- Mini Outdoor Kitchen area with Mini Fridge and Slide Out Grill (375BHO, 377BH Only)
- 190 Watt Solar Panel
- One Year of Saferide™ RV Roadside Assistance
- Free Membership to Forest River Owners Group (F.R.O.G.)

ELECTRONICS

- 32" Television in the Bedroom
- 12V AM/FM/DVD Stereo System with (2) Waterproof Exterior Speakers
- (2) Exterior Satellite and Cable Hook-ups to Bedroom and Living Room
- Prewired for Satellite to the Roof

KITCHEN

- Ashley Grey Cabinet Doors and Fascia in Kitchen and Living Room
- LED Lighting Fixtures
- Kitchen Pantry with Full Extension Pull-out Drawers (Where applicable)
- Residential, High Top, Swivel, Kitchen Faucet with Pull-out Sprayer
- Stainless Steel, 30" Over the Range Microwave Oven
- Full Panel Backsplashes (Where applicable)
- Backlit Medallion Over the Island
- Free Standing Table with Center Leaf and (4) Chairs (2 Folding /2 stationary with hidden storage)
- Congoleum® Flooring throughout the Living Room, Bedroom, and Bath (Carpet mandatory in dining slide)

LIVING ROOM

- Larger Full View Windows - Every Window Opens for Ventilation
- Luxury Hide-a-Bed Sofa
- 36" Fireplace
- Congoleum® Flooring (Carpet mandatory in dining slide)

BATHROOM

- Full 48" x 30" Rectangular Shower with Large Seat and Sliding Glass Doors
- Large Single or Double Faucet Sinks with White Cabinetry
- Skylight Over the Shower
- Upgraded Shower Head
- 18" High Porcelain Toilet with Top Circular Flush System
- Create-A-Breeze Circulation Fan
- Convenient Wall Switches for Fan and Lights
- Extra Storage for Linens
- LED Night Lighting Under the Vanity

BEDROOM

- Black-out Night Shades (Bedroom only)
- Individual Reading Lighting Above the Bed
- USB Plug-ins on Each Side of the King Bed
- Standard 72" x 80" King Bed (N/A 385TH)
- Flip-Up Dresser Top with Hidden Storage
- Storage Area Under the Bed

OPTIONS

EXTERIOR

- 21,000 Lb. Trailair Air Ride Hitch
- Dual Pane Frameless, Tinted Windows
- Furrion Rear Observation or (4) Camera Security Systems
- Slide-out Awning Toppers
- 12' THULE® Power Awning on Dining Slide (N/A 371FL, 375RD, 385TH)
- Heat Pump on Main Air Conditioner
- Truma™ On-Demand Hot Water System
- Second Go Power Solar Panel
- Full Body Paint Package
- LP Generator Prep
- 5.5K Onan Marquis Gold LP Generator with Prep
- King, Roof Mounted Satellite – My Dish RV Flexible Programming Including Local Channels

KITCHEN

- 18 Cu. Ft., Stainless Steel, Gas/Electric Refrigerator
- Optional 30" Convection/Microwave
- Trackless Shaw® Carpet in the Living Room or Bedroom
- Dishwasher in the Island (N/A 385TH, 371FL, 388RK2)
- Booth Dinetette (N/A 371FL, 375RD, 385TH, 388RK2)
- Cedar Creek Outdoor Party Center in Front Storage Compartment (N/A 385TH, 371FL)

BEDROOM

- Upgraded Luxury King Bed
- Upgraded Luxury Queen Bed
- Optional Side-by-Side Washer/Dryer
- Cadet Wall Mounted Heater with Circulation Fan



BAHAMA



BISCOTTI



LINEN

GVWR (Gross Vehicle Weight Rating) - is the maximum permissible weight of the unit when fully loaded. It includes all weights, inclusive of all fluids, cargo, optional equipment and accessories. For safety and product performance do NOT exceed the GVWR.

GAWR (Gross Axle Weight Rating) - is the maximum permissible weight, including cargo, fluids, optional equipment and accessories that can be safely supported by a combination of all axles.

UVW (Unloaded Vehicle Weight) - is the typical weight of the unit as manufactured at the factory. It includes all weight at the unit's axle(s) and tongue or pin and LP Gas. The UVW does not include cargo, fresh potable water, additional optional equipment or dealer installed accessories.

*Estimated Average based on standard build optional equipment.

CCC (Cargo Carrying Capacity)** - is the amount of weight available for fresh potable water, cargo, additional optional equipment and accessories. CCC is equal to GVWR minus UVW. Available CCC should accommodate fresh potable water (8.3 lbs per gallon). Before filling the fresh water tank, empty the black and gray tanks to provide for more cargo capacity.

**Estimated average based on standard build optional equipment.

Each Forest River RV is weighed at the manufacturing facility prior to shipping. A label identifying the unloaded vehicle weight of the actual unit and the cargo carrying capacity is applied to every Forest River RV prior to leaving our facilities. The load capacity of your unit is designated by weight, not by volume, so you cannot necessarily use all available space when loading your unit.

MODEL	291RW	311RL	345IK	360RL	371FL	375BHO	375RD	377BH	388RK2	388WDM	385TH
GVWR	14350 lb.	14435 lb.	16190 lb.	16525 lb.	16615 lb.	16170 lb.	18110 lb.	16135 lb.	18000 lb.	18115 lb.	18000 lb.
Hitch Weight	2350 lb.	2435 lb.	2190 lb.	2525 lb.	2615 lb.	2170 lb.	2110 lb.	2135 lb.	2100 lb.	2115 lb.	3176 lb.
UVW	11414 lb.	11244 lb.	12224 lb.	13134 lb.	13564 lb.	13359 lb.	13874 lb.	12679 lb.	12809 lb.	13144 lb.	14190 lb.
CCC	2936 lb.	3191 lb.	3966 lb.	3391 lb.	3051 lb.	2811 lb.	4236 lb.	3456 lb.	5132 lb.	4971 lb.	3810 lb.
Exterior Length	34' 7"	37'	38' 10"	40' 7"	41' 11"	43' 4"	42' 6"	42' 5"	41' 7"	41' 6"	42' 4"
Exterior Height	13' 5"	13' 5"	13' 5"	13' 5"	13' 5"	13' 5"	13' 5"	13' 5"	13' 5"	13' 5"	13' 5"
Exterior Width	96"	96"	96"	96"	96"	96"	96"	96"	96"	96"	96"
On Demand Fresh Water*	69 gal.	69 gal.	69 gal.	69 gal.	69 gal.	69 gal.	69 gal.	69 gal.	69 gal.	69 gal.	69 gal.
Grey Water	82 gal.	82 gal.	82 gal.	82 gal.	82 gal.	82 gal.	82 gal.	82 gal.	82 gal.	82 gal.	82 gal.
Black Water	41 gal.	41 gal.	41 gal.	41 gal.	41 gal.	41 gal.	41 gal.	41 gal.	41 gal.	41 gal.	41 gal.
Awning Size	18 ft.	18 ft.	18 ft.	18 ft.	18 ft.	18 ft.	18 ft.	21 ft.	18 ft.	21 ft.	18 ft.

*On-Demand, Tankless Water Heater

CEDAR CREEK FULL BODY PAINT



SAPPHIRE

OPAL

ONYX

Full Body Paint will turn heads wherever you travel. These bold new exterior options are offered along with our Standard Graphics.



NIGHT FX GRAPHICS

The fun continues into the night with Cedar Creek's energy efficient LED lighting and eye-catching luminous graphics.



All information contained in this brochure is believed to be accurate at the time of publication. However, during the model year, it may be necessary to make revisions and Forest River, Inc., reserves the right to make all such changes without notice, including prices, colors, materials, equipment and specifications as well as the addition of new models and the discontinuance of models shown in this brochure. Therefore, please consult with your Forest River dealer and confirm the existence of any materials, design or specifications that are material to your purchase decision. ©2021 Cedar Creek, a Division of Forest River, Inc., a Berkshire Hathaway company. All Rights Reserved. 09/21

FREE MEMBERSHIP
to Forest River Owners' Group

www.forestriverfrog.com

YOUR CEDAR CREEK DEALER



PRE-DELIVERY INSPECTION FACILITY
20,000 square feet of quality assurance. The bare essentials for a premium product. This state-of-the-art facility gives immediate daily feedback to production for quality assurance in every unit built.

24/7 EMERGENCY ROADSIDE ASSISTANCE WITH VEHICLE PURCHASE*

TOWING
JUMP-STARTS
TIRE CHANGES
FLUID DELIVERY
LOCKOUT
SERVICE

WINCH-OUT
MOBILE MECHANIC
TECHNICAL
SUPPORT
DEALER LOCATOR
SERVICES



*VALID FOR 1 YEAR FROM DATE OF PURCHASE

CEDAR CREEK

**THE SMART CHOICE FOR
THE EXPERIENCED RV'ER**

FOREST RIVER INC. CEDAR CREEK DIVISION

501 Hawpatch Road • Topeka, IN 46571
Phone: 260-593-4013 • Parts & Service Phone: 260-593-4000
On The Web at: www.forestriverinc.com/cedarcreek



www.ForestRiverBuyLocal.com



Learn More
Scan this barcode using a QR Reader on your smart phone to learn more about Forest River.



A Berkshire Hathaway company.