



2016



BUILD LASTING MEMORIES  
#LETSJAYCO



**2**  
YEAR  
WARRANTY



# JAY FLIGHT

## 1968 TO TODAY: GENERATIONS OF FAMILY FUN

If it's not done well, it's not worth doing. That was Jayco founder Lloyd Bontrager's philosophy. He thought that his family deserved a better RV—and that yours does, too. One that's sturdy, carefully designed and built to last. Nearly 50 years later, his legacy lives on—in the Jay Flight.

**Discover America's No. 1-selling travel trailer.**



### JAY FLIGHT THROWBACK

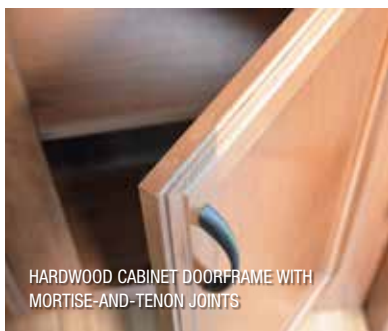
Here's our 2005 Jay Flight brochure cover—the year we first became America's best-selling travel trailer.

SHARE YOUR PHOTOS AND STORIES ON SOCIAL MEDIA WITH [#LETSJAYCO](https://www.instagram.com/letsjayco)





264BHW INTERIOR



HARDWOOD CABINET DOORFRAME WITH MORTISE-AND-TENON JOINTS



POWER AWNING AND EXTERIOR SPEAKERS



PLYWOOD DINETTE AND BUNK BASES



BATH SKYLIGHT



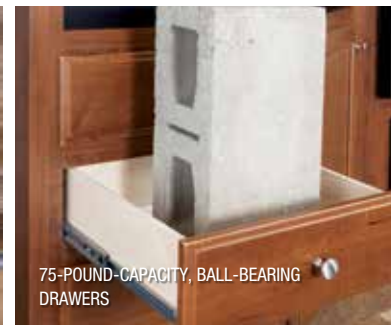
DENVER MATTRESS®



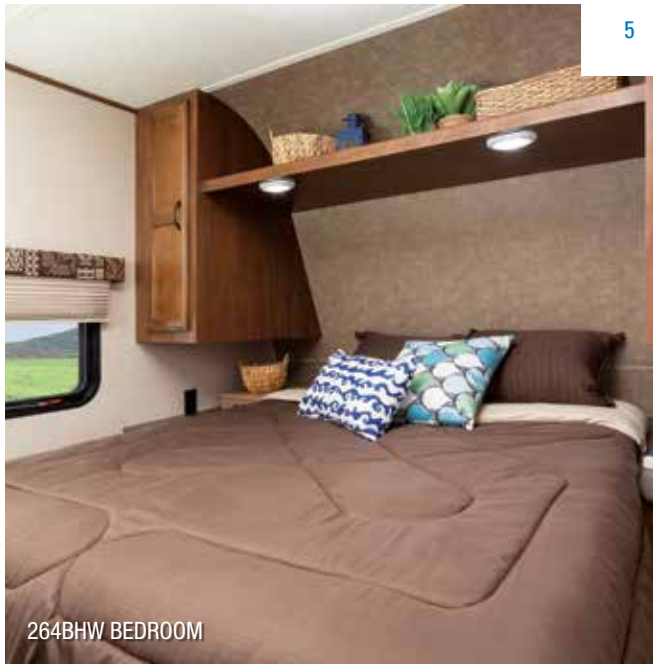
INTERIOR LED LIGHTING



DENVER MATTRESS BUNK MATS



75-POUND-CAPACITY, BALL-BEARING DRAWERS



264BHW BEDROOM

# JAY FLIGHT SLX

## GO FREELY

When towing isn't a concern, you're free to have fun. And the lightweight Jay Flight SLX is the perfect place for it. Durable construction, brand-name appliances and comfortable sleeping options make the memories even sweeter.



195RB INTERIOR

## ELITE PACKAGE



LARGE ENTRY DOOR GRAB HANDLE



MOR/RYPDE® CRE3000™ SUSPENSION



MULTIFUNCTIONAL DIGITAL REMOTE



SKYLIGHT WITH SHADE



UPGRADED FAUCET WITH PULLOUT SPRAYER AND SINK COVERS



RAISED-PANEL, HARDWOOD CABINET DOORS

Black tank flush • 80-gallon fresh water capacity • Rear ladder • Refrigerator door inserts (select models)  
Hardwood drawer fronts • Porcelain toilet

# JAY FLIGHT

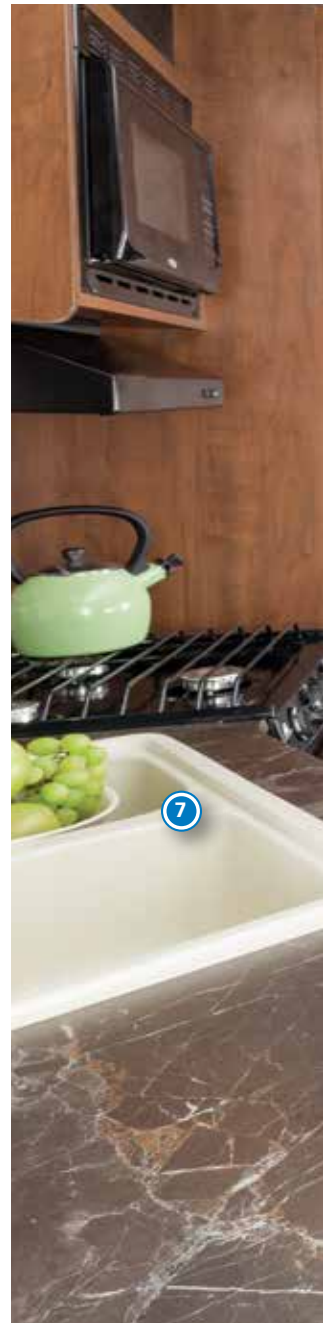
## FOLLOW THE FUN

There's something for everyone with the 2016 Jay Flight lineup. With models ranging from 23 to 38 feet, our family-friendly floorplans offer options you'll love—at a value that's unbeatable.



### MAIN INTERIOR KEY:

1. Interior LED lighting
2. Decorative lighting above dinette and on slideout wall
3. Vented windows on slideout end walls
4. Storage under booth dinette with sliding trays
5. Wood-look vinyl flooring
6. 8-cubic-foot refrigerator
7. Large 60/40 sink with high-rise faucet
8. Directional and closeable A/C ducts
9. Hardwood cabinet framing with mortise-and-tenon joints



## POPULAR JAY FLIGHT OPTIONS



FIBERGLASS SIDEWALLS WITH FRAMELESS WINDOWS



TRI-FOLD HIDE-A-BED WITH DENVER MATTRESS (1)



TRI-FOLD HIDE-A-BED WITH DENVER MATTRESS (2)



THERMAL PACKAGE: INSULATED, HEATED AND ENCLOSED UNDERBELLY AND TWO-SIDED REFLECTIVE FOIL IN MAIN ROOF AND SLIDEOUT FLOORS



AM/FM/CD/DVD PLAYER WITH MP3 HOOKUP AND BLUETOOTH® HDMI®



SOLAR PREP



28BHBE INTERIOR

## STANDARD FEATURES



75-POUND-CAPACITY, BALL-BEARING DRAWER GUIDES



POWER AWNING WITH LED LIGHT STRIP



UTILITY LIGHTING SYSTEM



STEEL WHEEL WELLS



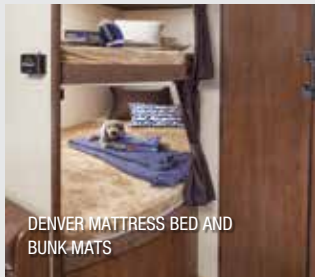
PLYWOOD DINETTE AND BUNK BASES



USB/12V PORT IN MASTER BEDROOM



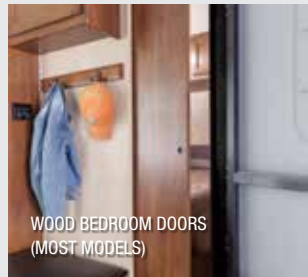
CENTRAL COMMAND CENTER



DENVER MATTRESS BED AND BUNK MATS

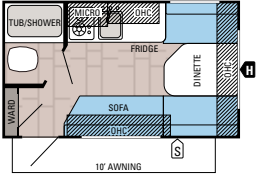


SHOE GARAGE (SELECT MODELS)

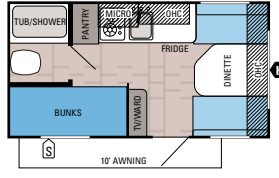


WOOD BEDROOM DOORS (MOST MODELS)

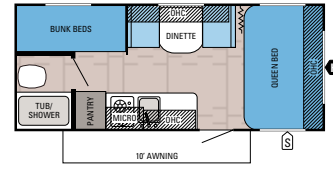
## JAY FLIGHT SLX FLOORPLANS



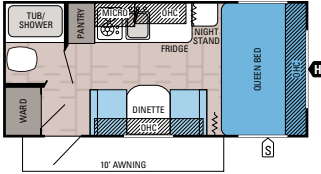
**JAY FLIGHT SLX | 145RB**  
Ext. Lgth: 16' 6" Ext. Ht: 111"  
Unloaded Wt. (lbs.): 2,340 Sleeps: 2-3



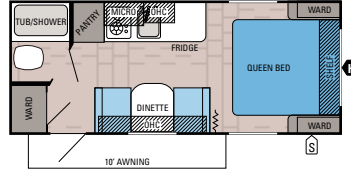
**JAY FLIGHT SLX | 154BH**  
Ext. Lgth: 17' 10" Ext. Ht: 111"  
Unloaded Wt. (lbs.): 2,540 Sleeps: 3-4



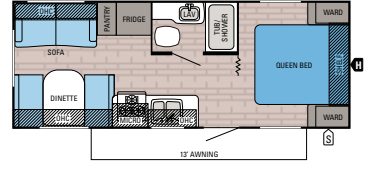
**JAY FLIGHT SLX | 174BH**  
Ext. Lgth: 21' 6" Ext. Ht: 112"  
Unloaded Wt. (lbs.): 2,930 Sleeps: 3



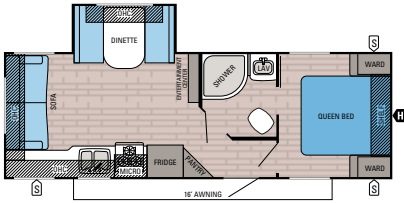
**JAY FLIGHT SLX | 185RB**  
Ext. Lgth: 20' 0" Ext. Ht: 113"  
Unloaded Wt. (lbs.): 2,760 Sleeps: 3



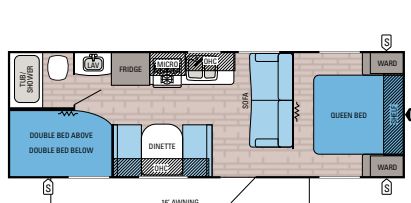
**JAY FLIGHT SLX | 195RB**  
Ext. Lgth: 21' 8" Ext. Ht: 112"  
Unloaded Wt. (lbs.): 2,945 Sleeps: 3



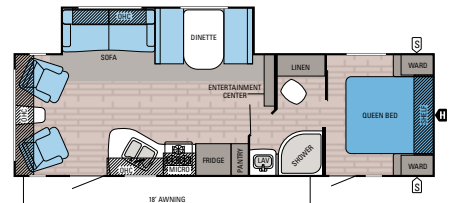
**JAY FLIGHT SLX | 212QBW**  
Ext. Lgth: 25' 6" Ext. Ht: 126"  
Unloaded Wt. (lbs.): 4,140 Sleeps: 4



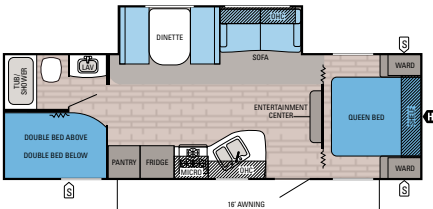
**JAY FLIGHT SLX | 245RLSW**  
Ext. Lgth: 28' 2" Ext. Ht: 133"  
Unloaded Wt. (lbs.): 5,205 Sleeps: 4-6



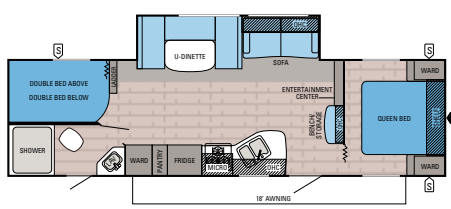
**JAY FLIGHT SLX | 264BHW**  
Ext. Lgth: 29' 3" Ext. Ht: 126"  
Unloaded Wt. (lbs.): 4,550 Sleeps: 8-10



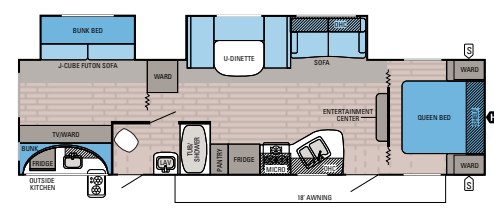
**JAY FLIGHT SLX | 265RLSW**  
Ext. Lgth: 27' 7" Ext. Ht: 135"  
Unloaded Wt. (lbs.): 6,005 Sleeps: 4-6



**JAY FLIGHT SLX | 267BHSW**  
Ext. Lgth: 30' 2" Ext. Ht: 132"  
Unloaded Wt. (lbs.): 5,615 Sleeps: 8-10



**JAY FLIGHT SLX | 287BHSW**  
Ext. Lgth: 33' 5" Ext. Ht: 133"  
Unloaded Wt. (lbs.): 6,090 Sleeps: 8-10



**JAY FLIGHT SLX | 32BDSW**  
Ext. Lgth: TBD Ext. Ht: TBD  
Unloaded Wt. (lbs.): TBD Sleeps: 8-10

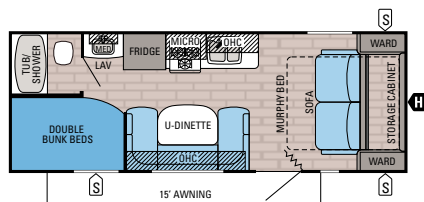
## JAY FLIGHT SLX SPECIFICATIONS

MODELS	DIMENSIONS				WEIGHT (LBS.)			TANKS (GALS.)			
	FLOORPLAN	EXTERIOR TRAVEL LENGTH	EXTERIOR WIDTH	EXTERIOR HEIGHT WITH A/C	INTERIOR HEIGHT	UNLOADED VEHICLE WEIGHT	DRY HITCH WEIGHT	GROSS VEHICLE WEIGHT RATING	CARGO CARRYING CAPACITY	FRESH WATER CAPACITY (INCLUDES WATER HEATER)	GREY WASTE WATER CAPACITY
145RB	16' 6"	85"	111"	73"	2,340	235	2,995	655	16	15	9
154BH	17' 10"	85"	111"	73"	2,540	305	3,200	660	16	15	9
174BH	21' 6"	85"	112"	73"	2,930	310	3,500	570	26	15	9
185RB	20' 0"	85"	113"	73"	2,760	315	3,500	740	26	15	9
195RB	21' 8"	85"	112"	73"	2,945	260	3,500	555	26	15	9
212QBW	25' 6"	96"	126"	81"	4,140	415	6,000	1,860	48	39	39
245RLSW	28' 2"	96"	133"	81"	5,205	525	6,500	1,295	44	39	39
264BHW	29' 3"	96"	126"	81"	4,550	490	6,500	1,950	48	39	39
265RLSW	27' 7"	96"	135"	81"	6,005	715	7,500	1,495	44	39	39
267BHSW	30' 2"	96"	132"	81"	5,615	645	7,000	1,385	44	39	39
287BHSW	33' 5"	96"	133"	81"	6,090	645	7,500	1,410	44	39	39
32BDSW	TBD	TBD	TBD	TBD	TBD	TBD	TBD	TBD	TBD	TBD	TBD

\*3,750 on Baja Edition Idaho-built units.

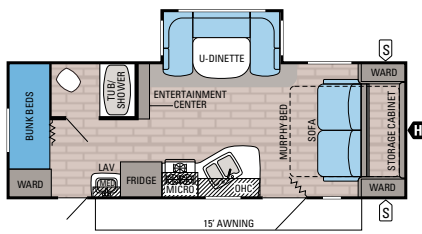


## JAY FLIGHT FLOORPLANS



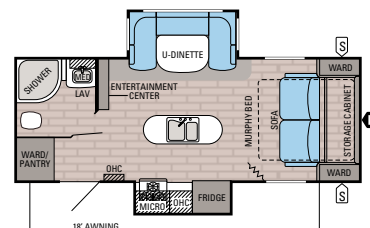
**JAY FLIGHT | 23MB\*** **OPTION B**

Ext. Lgth: **27' 0"** Ext. Ht: **125"**  
Unloaded Wt. (lbs.): **4,430** Sleeps: **4-8**



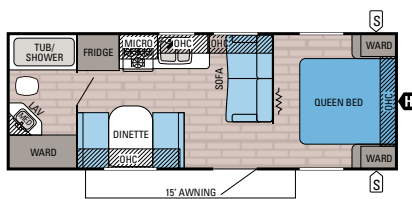
**JAY FLIGHT | 23MBH\***

Ext. Lgth: **27' 2"** Ext. Ht: **133"**  
Unloaded Wt. (lbs.): **5,345** Sleeps: **4-6**



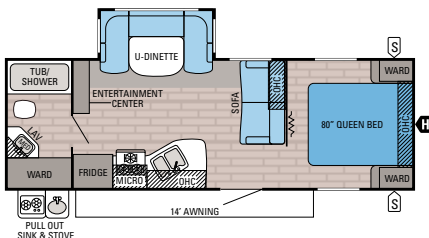
**JAY FLIGHT | 23MDS**

Ext. Lgth: **25' 11"** Ext. Ht: **132"**  
Unloaded Wt. (lbs.): **5,475** Sleeps: **2-4**



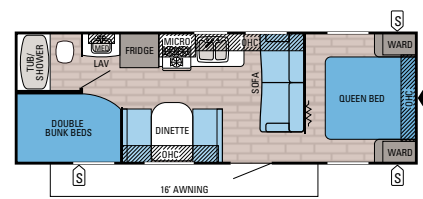
**JAY FLIGHT | 23RB** **OPTION C**

Ext. Lgth: **27' 2"** Ext. Ht: **127"**  
Unloaded Wt. (lbs.): **4,370** Sleeps: **4-6**



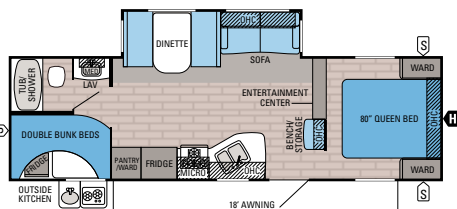
**JAY FLIGHT | 24RBS** **OPTION D**

Ext. Lgth: **28' 8"** Ext. Ht: **134"**  
Unloaded Wt. (lbs.): **5,280** Sleeps: **4-6**



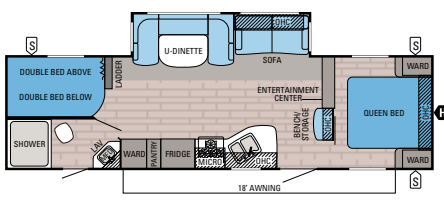
**JAY FLIGHT | 26BH** **OPTION B**

Ext. Lgth: **29' 3"** Ext. Ht: **127"**  
Unloaded Wt. (lbs.): **4,700** Sleeps: **6-10**



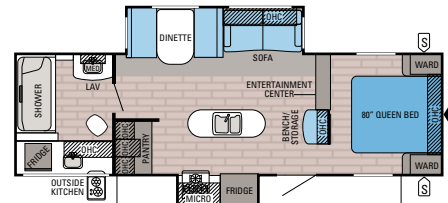
**JAY FLIGHT | 27BHS** **OPTIONS: D, E**

Ext. Lgth: **31' 8"** Ext. Ht: **131"**  
Unloaded Wt. (lbs.): **6,065** Sleeps: **7-10**



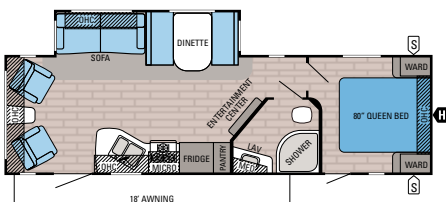
**JAY FLIGHT | 28BHB** **OPTION E**

Ext. Lgth: **33' 5"** Ext. Ht: **134"**  
Unloaded Wt. (lbs.): **6,540** Sleeps: **9-10**



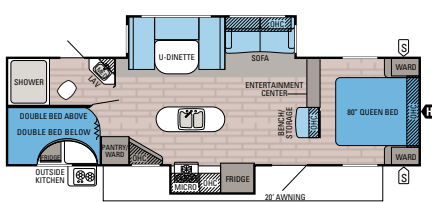
**JAY FLIGHT | 28RBD** **OPTIONS: D, E**

Ext. Lgth: **31' 8"** Ext. Ht: **135"**  
Unloaded Wt. (lbs.): **6,890** Sleeps: **3-6**



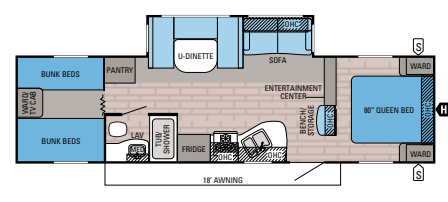
**JAY FLIGHT | 28RLS** **OPTIONS: D, E**

Ext. Lgth: **32' 5"** Ext. Ht: **134"**  
Unloaded Wt. (lbs.): **6,340** Sleeps: **4-6**



**JAY FLIGHT | 29BHD** **OPTION E**

Ext. Lgth: **34' 1"** Ext. Ht: **133"**  
Unloaded Wt. (lbs.): **7,275** Sleeps: **8-10**

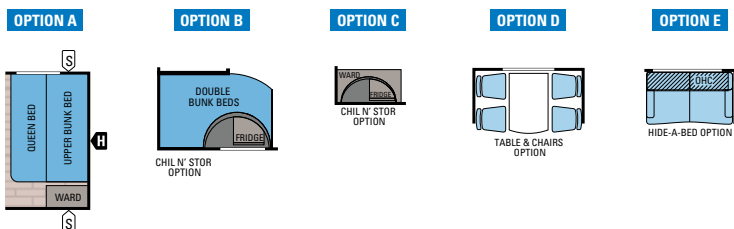


**JAY FLIGHT | 29QBS** **OPTIONS: E, G**

Ext. Lgth: **34' 11"** Ext. Ht: **133"**  
Unloaded Wt. (lbs.): **6,935** Sleeps: **8-9**

### OPTIONS:

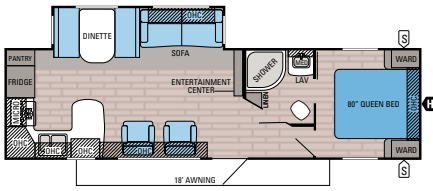
### FLOORPLAN LEGEND:



- STORAGE
- TRAILER HITCH
- LAV BATHROOM SINK
- MED MEDICINE CABINET
- MICRO MICROWAVE
- OHC OVERHEAD CABINETS
- FRIDGE REFRIGERATOR
- WARD WARDROBE

\*Idaho only

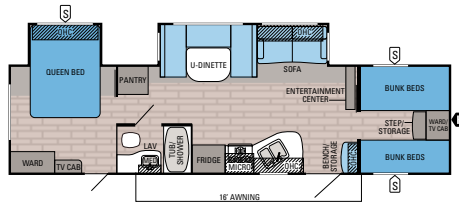
## JAY FLIGHT FLOORPLANS



## JAY FLIGHT | 29RKS

OPTIONS: D, E, F

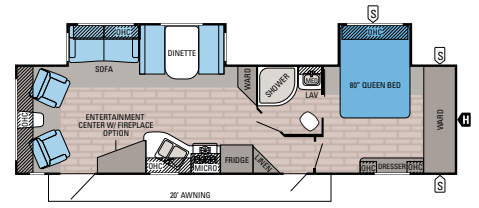
Ext. Lgth: 33' 8" Ext. Ht: 133"  
 Unloaded Wt. (lbs.): 6,790 Sleeps: 3-6



## JAY FLIGHT | 31QBDS

OPTIONS: E, H

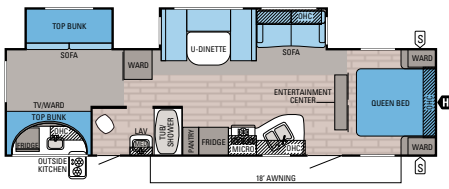
Ext. Lgth: 35' 11" Ext. Ht: 133"  
 Unloaded Wt. (lbs.): 7,625 Sleeps: 9-10



## JAY FLIGHT | 31RLDS

OPTIONS: D, E

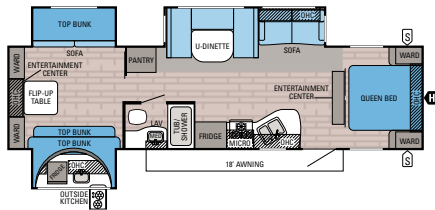
Ext. Lgth: 35' 11" Ext. Ht: 133"  
 Unloaded Wt. (lbs.): 7,610 Sleeps: 3-6



## JAY FLIGHT | 32BHDS

OPTION E

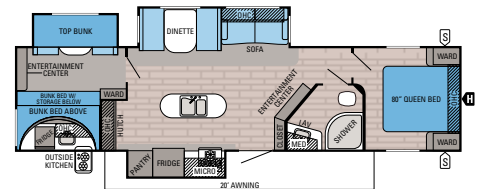
Ext. Lgth: 35' 8" Ext. Ht: 132"  
 Unloaded Wt. (lbs.): 7,600 Sleeps: 8-10



## JAY FLIGHT | 32TSBH

OPTION E

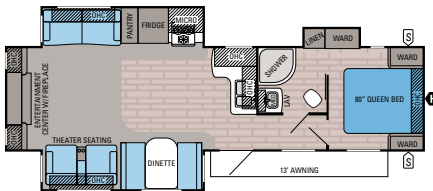
Ext. Lgth: 35' 8" Ext. Ht: 132"  
 Unloaded Wt. (lbs.): 8,075 Sleeps: 8-11



## JAY FLIGHT | 33RBTS

OPTIONS: D, E, I

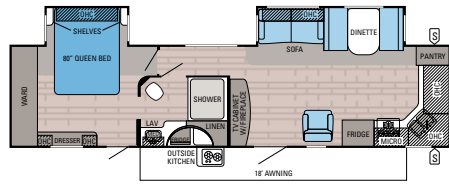
Ext. Lgth: 37' 8" Ext. Ht: 132"  
 Unloaded Wt. (lbs.): 8,310 Sleeps: 7-10



## JAY FLIGHT | 33RLDS

OPTIONS: D, E, F

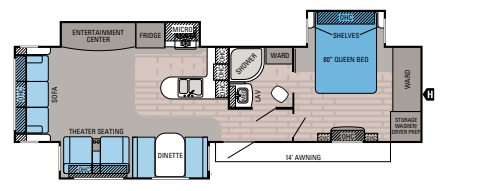
Ext. Lgth: 35' 8" Ext. Ht: 133"  
 Unloaded Wt. (lbs.): 8,060 Sleeps: 3-6



## JAY FLIGHT | 34FKDS

OPTIONS: D, E, F, J

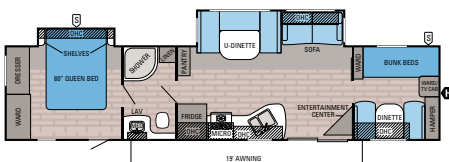
Ext. Lgth: 38' 1" Ext. Ht: 131"  
 Unloaded Wt. (lbs.): 8,100 Sleeps: 3-6



## JAY FLIGHT | 34RSBS

OPTIONS: D, F, J, K

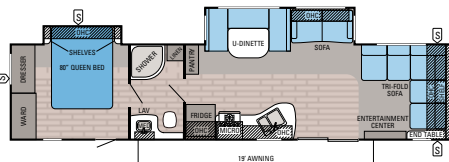
Ext. Lgth: 37' 6" Ext. Ht: 133"  
 Unloaded Wt. (lbs.): 8,440 Sleeps: 3-6



## JAY FLIGHT | 38BHDS

OPTIONS: E, J, L, M, N

Ext. Lgth: 40' 3" Ext. Ht: 134"  
 Unloaded Wt. (lbs.): 8,195 Sleeps: 8-10

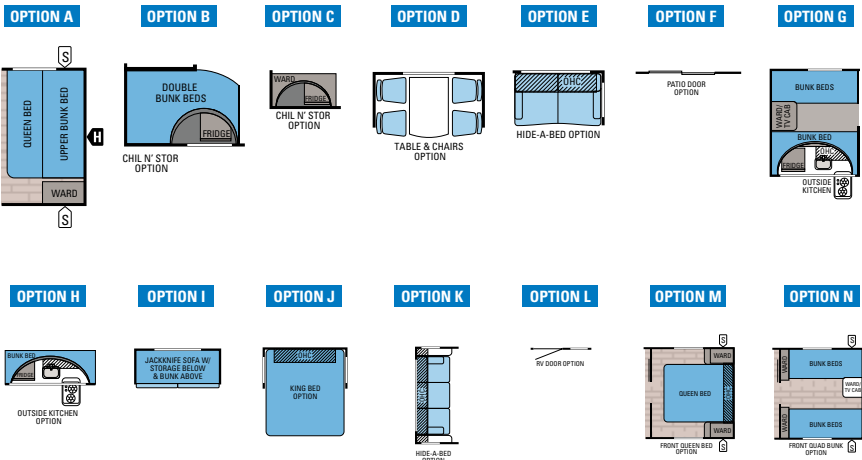


## JAY FLIGHT | 38FDDS

OPTIONS: E, J, L

Ext. Lgth: 40' 3" Ext. Ht: 134"  
 Unloaded Wt. (lbs.): 8,185 Sleeps: 6-8

OPTIONS:



FLOORPLAN LEGEND:

- S STORAGE
- H TRAILER HITCH
- LAV BATHROOM SINK
- MED MEDICINE CABINET
- MICRO MICROWAVE
- OHC OVERHEAD CABINETS
- FRIDGE REFRIGERATOR
- WARD WARDROBE

JAY FLIGHT SPECIFICATIONS

MODELS	DIMENSIONS				WEIGHT (LBS.)				TANKS (GALS.)			
	FLOORPLAN	EXTERIOR TRAVEL LENGTH	EXTERIOR WIDTH	EXTERIOR HEIGHT WITH A/C	INTERIOR HEIGHT	UNLOADED VEHICLE WEIGHT	DRY HITCH WEIGHT	GROSS VEHICLE WEIGHT RATING	CARGO CARRYING CAPACITY	FRESH WATER CAPACITY (INCLUDES WATER HEATER)	FRESH WATER CAPACITY (INCLUDES WATER HEATER & OPT. FRESH WATER TANK)	GREY WASTE WATER CAPACITY
23MB	27' 0"	96"	125"	81"	4,430	470	6,500	2,070	48	90	32.5	32.5
23MBH	27' 2"	96"	133"	81"	5,345	625	7,250	1,905	44	82	32.5	32.5
23MBS	25' 11"	96"	132"	81"	5,475	575	7,700	2,225	44	82	32.5	39
23RB	27' 2"	96"	127"	81"	4,370	505	6,500	2,130	48	90	39	39
24RBS	28' 8"	96"	134"	81"	5,280	620	7,500	2,220	44	82	39	39
26BH	29' 3"	96"	127"	81"	4,700	475	7,000	2,300	48	90	39	39
27BHS	31' 8"	96"	131"	81"	6,065	620	8,250	2,185	44	82	39	39
28BHBE	33' 5"	96"	134"	81"	6,540	660	9,250	2,710	44	82	39	39
28RBDS	31' 8"	96"	135"	81"	6,890	755	9,250	2,360	44	82	78	39
28RLS	32' 5"	96"	134"	81"	6,340	700	8,750	2,410	44	82	39	39
29BHDS	34' 1"	96"	133"	81"	7,275	765	9,750	2,475	46	86	71.5	39
29QBS	34' 11"	96"	133"	81"	6,935	855	9,500	2,565	46	86	39	39
29RKS	33' 8"	96"	133"	81"	6,790	815	9,500	2,710	46	86	78	39
31QBDS	35' 11"	96"	133"	81"	7,625	820	10,250	2,625	46	86	32.5	39
31RLDS	35' 11"	96"	133"	81"	7,610	1,070	10,250	2,640	46	86	39	39
32BHDS	35' 8"	96"	132"	81"	7,600	910	9,975	2,375	46	86	39	32.5
32TSBH	35' 8"	96"	132"	81"	8,075	685	10,500	2,425	46	86	40.5	39
33RBTS	37' 8"	96"	132"	81"	8,310	870	10,750	2,440	46	86	78	32.5
33RLDS	35' 8"	96"	133"	81"	8,060	1,005	10,300	2,240	46	86	39	39
34FKDS	38' 1"	96"	131"	81"	8,100	1,065	10,750	2,650	46	86	71.5	39
34RSBS	37' 6"	96"	133"	81"	8,440	1,250	10,950	2,510	46	86	78	39
38BHDS	40' 3"	96"	134"	81"	8,195	1,140	10,950	2,755	50	90	39	39
38FDDS	40' 3"	96"	134"	81"	8,185	1,185	10,950	2,465	50	90	39	39

**Unloaded Vehicle Weight (UVW):** Sometimes referred to as "Dry Weight," UVW means the typical weight of this trailer as built at the factory. The UVW, as used in product literature and other promotional materials, does not include cargo, fresh water, propane, options or dealer-installed accessories.

**Gross Vehicle Weight Rating (GVWR):** GVWR means the maximum permissible weight of the trailer, including the UVW plus passengers, personal items, all cargo, fluids, options, and dealer-installed accessories. The GVWR is equal to or greater than the sum of the UVW and the CCC.

**Cargo Carrying Capacity (CCC):** CCC means the maximum weight of all passengers, personal items, food, fresh water, propane, tools, other cargo and dealer-installed accessories that can be carried by the trailer. CCC is equal to or less than GVWR minus UVW. The addition of options will decrease the CCC.

**Hitch Weight (HW):** The hitch weight, as used in product literature and other promotional materials, does not include cargo, fresh water, propane gas, options or dealer-installed accessories. The addition of these types of items will either add to or subtract from the stated hitch weight.

It is important for your safety and enjoyment that your tow vehicle be adequately sized and equipped to tow and handle the GVWR of the RV you select. Review weights and rating of your tow vehicle and consult a competent advisor for questions or advice. Whether you are new to RVing or a veteran, get a feel for the performance of your tow vehicle before heading out on the roadways. When you tow an RV, you must drive differently than when you drive a single vehicle. Practice hooking up, driving, backing up and braking in a safe environment or seek out professional instruction. Jayco affixes a weight label to each RV which lists weight information for that vehicle. See specifications chart above.

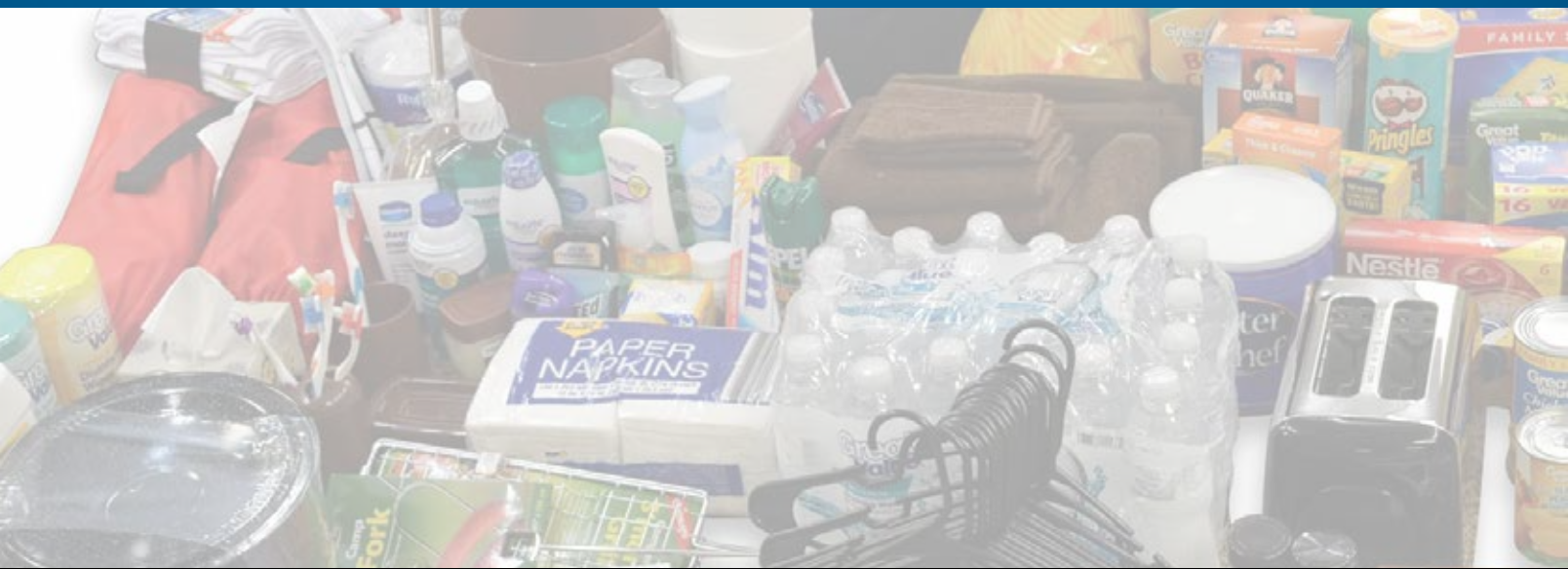
Jay Flight SLX (7-foot)  
 Jay Flight SLX (8-foot)  
 Jay Flight

Exterior Equipment	Jay Flight SLX (7-foot)	Jay Flight SLX (8-foot)	Jay Flight
.024 mesa crimp exterior aluminum	•	•	•
4-inch cambered steel box tube frame	•	•	•
I-class cambered structural steel I-beams			•
Fully integrated A-frame	•	•	•
Fiberglass sidewalls with frameless windows			•
5/8-inch tongue-and-groove plywood floor decking		•	•
Magnum Truss™ Roof System with one-piece, seamless DiFlex II material	•	•	•
2-sided reflective foil insulation in flush-floor slideout floors		•	•
Thermal Package: Insulated, heated and enclosed underbelly and 2-sided, reflective foil insulation in main roof and slideout floors			•
Electric slideouts with enclosed gear system (slide models)		•	•
Large exterior downspouts			•
30-inch x 72-inch main entrance door		•	•
Amber patio light	•	•	
13,500-BTU roof-mounted A/C	•	•	•
15,000-BTU roof-mounted A/C		•	•
Clamp-ringed, safety-glass windows with automotive gasket seals	•	•	•
Radial tires with galvanized steel, impact-resistant wheel wells	•	•	•
Aluminum rims			•
E-Z Lube® axles			•
Radius-cornered entrance and baggage doors	•	•	•
Double-wide corner mold extrusions	•	•	•
Aerodynamic front profile	•	•	•
Front window with integrated rock guard	•		• (select models)
30-amp service	•	•	•
50-amp service with second A/C prep (select models)			•
20-pound propane bottle(s)	• (1)	• (2)	
30-pound propane bottles with cover			•
Exterior speakers	•	•	•
Spare tire	•	•	•
Power awning	•	•	• (with LED light)
Front diamond plate	•	•	•
Stabilizer jacks with sand pads	• (2)	• (4)	• (4)

Jay Flight SLX (7-foot)  
 Jay Flight SLX (8-foot)  
 Jay Flight

	Jay Flight SLX (7-foot)	Jay Flight SLX (8-foot)	Jay Flight
Electric stabilizer jacks (4)			•
Outside kitchen (standard in 28RBDS, 29BHDS, 32BHDS, 33RBTS, 32TSBH and 34FKDS; optional in 29QBS and 31OBDS)			•
Outside shower			•
G20 dark-tint windows	•	•	•
Utility lighting system			•
Solar prep			•
Power tongue jack			•
Roof ladder			•
Cargo accessory receiver (select models)			•
Chil N' Stor outside baggage compartment with refrigerator (select models)			•
Patio door (29RKS, 33RLDS, 34FKDS, 34RSBS)			•
Bumper-mount grill			•
Pullout camp kitchen (24RBS, 27BHS)			•
Electronic Sway Control	•	•	•

Interior Equipment	Jay Flight SLX (7-foot)	Jay Flight SLX (8-foot)	Jay Flight
81-inch ceiling height		•	•
Screwed-and-glued cabinetry	•	•	•
Wardrobe/pantry storage	•	•	•
Coat hook by entry door (select models)			•
Ball-bearing drawer guides throughout, 75-pound capacity with full extension	•	•	•
Laminate countertops with T-mold edging	•	•	•
Acrylic sink	•		
Large 60/40 acrylic kitchen sink with high-rise faucet		•	•
2-burner range	•		
3-burner range		•	
3-burner range with 9,000-BTU SuperBurner™ and piezo igniter			•
3-cubic-foot refrigerator with temperature controls	•		
6-cubic-foot Norcold® refrigerator with temperature controls		•	
8-cubic-foot refrigerator (18-cubic-foot residential refrigerator in 38BHDS and 38FDSD)			•
Microwave	•	•	•
Oven		•	•
Decorative dinette and slideout room lighting (SuperSlide models)			•
Brushed nickel faucets			•



Jay Flight SLX (7-foot)  
 Jay Flight SLX (8-foot)  
 Jay Flight

Interior Equipment	Jay Flight SLX (7-foot)	Jay Flight SLX (8-foot)	Jay Flight
Range hood	•	•	•
Vented kitchen window			•
Hidden-switch command/charging center			•
Free-standing table with 4 chairs (select models)			•
Dinette with folding bunk			• (32BTS)
High-efficiency Atwood furnace	•	•	•
Wall-mounted 8,000-BTU A/C	•		
Jayco-made window treatments	•	•	•
Indoor/outdoor dinette table (select models)	•		
Backup/security camera prep			•
Premium multimedia sound system with MP3/iPod® input jacks	•	•	
Premium multimedia sound system with AM/FM/CD/DVD player with Bluetooth, HDMI and MP3 hookup			•
LED TV (28-inch, 32-inch or 39-inch, depending on model)			•
12V/dual USB charging port in bedroom			•
Plywood bed platforms	•	•	•
J-Steel™ jackknife sofa			•
Vinyl flooring	•	•	•
Shaw® residential-grade carpet			•
Linoleum in living area (select models)			•
Vented windows in the slideout room end walls (SuperSlide models)			•
Marine toilet with foot flush	•	•	•
Tub surround		•	•
Glass shower door (select models)			•
Shower curtain with curved shower track (select models)	•	•	•
Wood-trimmed mirror in bathroom	•	•	
Bathroom skylight	•	•	•
Bathroom power fan			•
Residential-height master bed			•
Queen Denver Mattress	• (select models)	•	•
King Denver Mattress (34FKDS, 34RSBS, 38FDDS, 38BHDS)			•
Main bed struts			•
Under-bed storage on main/queen beds	•	•	•
300-pound-rated bunk beds (select models)	•	•	•
600-pound-rated bunk beds (double bunks)		•	•
Second A/C in bedroom			•

Jay Flight SLX (7-foot)  
 Jay Flight SLX (8-foot)  
 Jay Flight

Privacy curtains in bunk areas (select models)		•	•
Vented bunk windows (select models)			•
4-inch Denver Mattress bunk mats (select models)	•	•	•
Wooden bedroom doors (select models)			•
Bedspread	• (select models)	•	•
Hide-a-bed sofa with Denver Mattress Sleep System (select models)			•
Pleated window shades	•	•	
Water heater bypass	•	•	•
6-gallon gas water heater	•		
6-gallon gas DSI water heater		•	
6-gallon gas/electric DSI water heater (10-gallon in 38BHDS, 38FDDS)			•
Cable/satellite TV hookup			•
Digital TV antenna			•
Sofa with folding bunk (33RBTS)			•

Optional      Customer Value Package

**Elite Package**

- Large entry door grab handle
- MOR/ryde CRE3000 suspension
- Multifunctional digital remote
- Skylight with shade
- Upgraded faucet with pullout sprayer and sink covers
- Raised-panel, hardwood upper cabinet doors in kitchen and dining area
- Black tank flush
- 80-gallon fresh water capacity (2 tanks)
- Rear ladder
- Refrigerator door inserts (select models)
- Hardwood drawer fronts
- Porcelain toilet

See back cover for Jay Flight interior décor options.



**CAMPING APPROVED:**

**Real-world tested, ready for fun**

From our camping families to yours—Jay Flight is designed for maximum fun. In fact, our crew tests each Jay Flight floorplan with loads of real-world camping supplies—279 pounds of everything you’d need for a Jay Flight adventure. From cereal boxes to grill skewers, we make sure there’s a place—and space—for it all.



40FSDS INTERIOR



40BHTS INTERIOR



40BHTS BUNK ROOM

## MAIN INTERIOR KEY:

1. Wood-look blinds
2. Residential refrigerator
3. Free-standing range
4. Large panoramic windows
5. 40-inch TV
6. Fireplace
7. Wood-look vinyl flooring
8. Interior LED lighting
9. Raised-panel, hardwood doors with mortise-and-tenon joints



# JAY FLIGHT BUNGALOW

## SETTLE IN AND STAY AWHILE

Set up camp—in style—with the 2016 Jay Flight Bungalow. A 96-inch interior height and a 102-inch wide-body construction mean there's plenty of space to stretch. And with standard residential features including an 18-cubic-foot refrigerator with ice maker, ceiling fan and 60-inch sliding patio door, it won't take long to feel right at home.



## POPULAR JAY FLIGHT BUNGALOW OPTIONS



FIBERGLASS SIDEWALLS

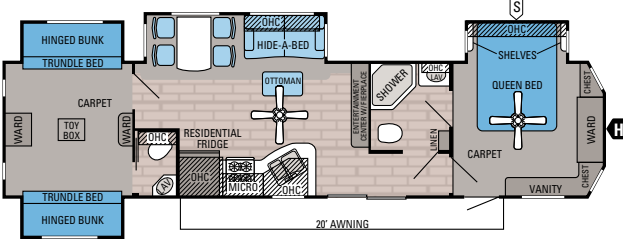


THEATER SEATING



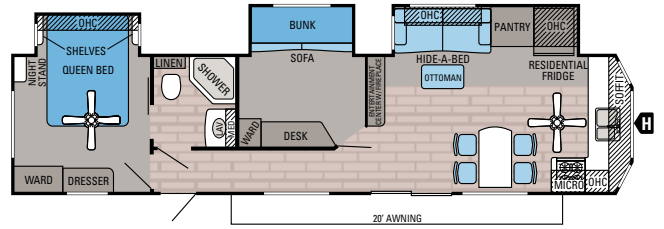
POWER AWNING WITH LED LIGHT

## JAY FLIGHT BUNGALOW FLOORPLANS



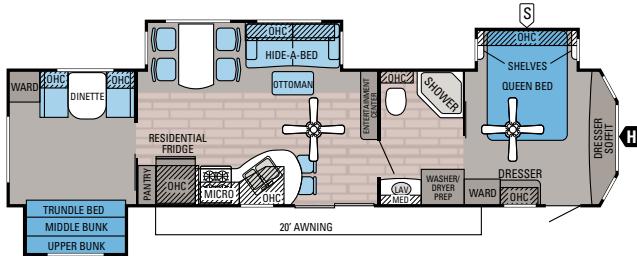
**JAY FLIGHT BUNGALOW | 40BHQS**    **OPTIONS: A, B, C, D**

Ext. Lgth: **40' 2"** Ext. Ht: **151"** Unloaded Wt. (lbs.): **11,165** Sleeps: **6-8**



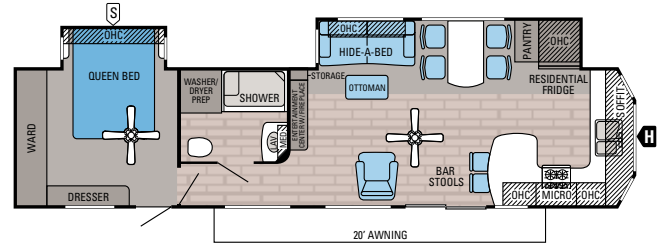
**JAY FLIGHT BUNGALOW | 40BHTS**    **OPTIONS: C, D**

Ext. Lgth: **40' 11"** Ext. Ht: **151"** Unloaded Wt. (lbs.): **10,775** Sleeps: **4-6**



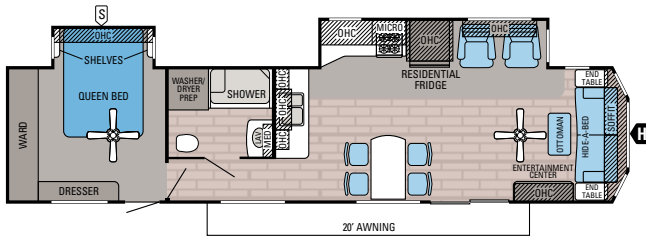
**JAY FLIGHT BUNGALOW | 40DBTS**    **OPTIONS: C, D, E**

Ext. Lgth: **40' 11"** Ext. Ht: **151"** Unloaded Wt. (lbs.): **10,550** Sleeps: **4-8**



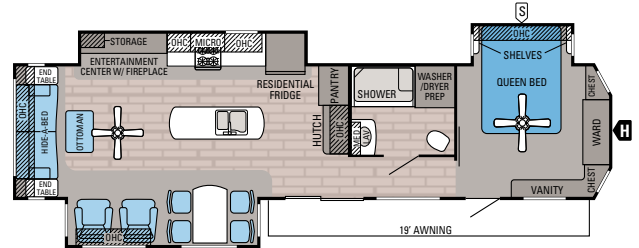
**JAY FLIGHT BUNGALOW | 40FKDS**    **OPTIONS: C, D**

Ext. Lgth: **40' 11"** Ext. Ht: **151"** Unloaded Wt. (lbs.): **10,570** Sleeps: **2-4**



**JAY FLIGHT BUNGALOW | 40FSDS**    **OPTIONS: C, D**

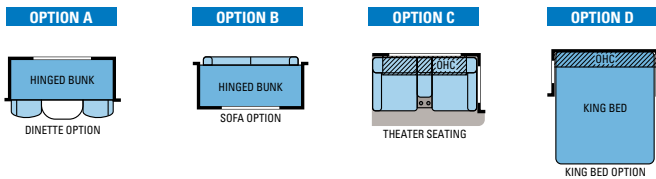
Ext. Lgth: **41' 8"** Ext. Ht: **151"** Unloaded Wt. (lbs.): **10,350** Sleeps: **4**



**JAY FLIGHT BUNGALOW | 40RLTS**    **OPTIONS: C, D**

Ext. Lgth: **40' 2"** Ext. Ht: **152"** Unloaded Wt. (lbs.): **10,840** Sleeps: **4**

**OPTIONS:**



## JAY FLIGHT BUNGALOW SPECIFICATIONS

MODELS	DIMENSIONS				WEIGHT (LBS.)				TANKS (GALS.)		
	FLOORPLAN	EXTERIOR LENGTH	EXTERIOR WIDTH	EXTERIOR HEIGHT WITH A/C	INTERIOR HEIGHT	UNLOADED VEHICLE WEIGHT	DRY HITCH WEIGHT	GROSS VEHICLE WEIGHT RATING	CARGO CARRYING CAPACITY	FRESH WATER CAPACITY (INCLUDES WATER HEATER)	GREY WASTE WATER CAPACITY
40BHQS	40' 2"	102"	151"	96"	11,165	1,545	13,000	1,835	48	78	78
40BHTS	40' 11"	102"	151"	96"	10,775	1,600	13,000	2,225	48	78	39
40DBTS	40' 11"	102"	151"	96"	10,550	1,445	12,500	1,950	48	78	39
40FKDS	40' 11"	102"	151"	96"	10,570	1,670	13,000	2,430	48	78	39
40FSDS	41' 8"	102"	151"	96"	10,350	1,580	12,500	2,150	48	39	39
40RLTS	40' 2"	102"	152"	96"	10,840	1,570	13,000	2,160	48	32.5	39



## STANDARD EXTERIOR EQUIPMENT

- 102-inch wide-body construction
- Magnum Truss Roof System with one-piece seamless DiFlex II material
- 3/8-inch tongue-and-groove plywood floor decking
- 12-inch I-class cambered structural steel I-beams
- 2-sided reflective foil in flush-floor slideout floors
- Electric-powered slideouts with enclosed gear system
- Radial tires with galvanized steel, impact-resistant wheel wells
- E-Z lube axles
- 60-inch residential-style sliding patio door with Low-E thermal-pane glass
- Exterior marine-grade speakers (2)
- Manual patio awning
- G20 dark-tint windows
- Atrium-style front wall with integrated lights
- Utility lighting system
- Detachable hitch
- Outside shower
- Black tank flush sprayer
- Solar prep

## STANDARD INTERIOR EQUIPMENT

- 96-inch interior height
- 120V ceiling fan in living room and bedroom
- Screwed-and-glued Northridge Caramel cabinetry
- Ball-bearing drawer guides, 75-pound capacity, full extension
- 18-cubic-foot, residential-style, 120V refrigerator with ice maker
- 20-inch free-standing 4-burner gas range with oven
- Large 60/40 deep-bowl acrylic kitchen sink with residential pullout sprayer

- 16-gallon effective (10-gallon tank) gas/electric DSI water heater
- Auto-ignition furnace
- DiamondFlor® hardwood-look vinyl flooring
- Residential Shaw® carpet with padding
- Vertical patio door blinds
- Wood-look mini blinds in living room
- Residential-style window treatments
- Night shades in bedroom
- Hide-a-bed with tri-fold Denver Mattress
- Electric fireplace with thermostat controls
- Cable/satellite prep
- Hidden-switch command/charging center
- Dual USB charging port in bedroom
- Medicine cabinet with mirror
- Porcelain toilet with foot flush
- Denver Mattress pillow-top mattress
- Bedroom stereo speakers (2)
- 4-inch, high-density foam dinette cushions (40DBTS)
- Plywood bed, dinette and bunk bases with 300-pound-rated bunks and Denver Mattress mats
- Central vacuum with push-button retract for easy hose storage
- Electrical outlets in master bedroom on each side of the bed
- Vented slideout end windows in living room and bedroom slides (most models)
- 6-panel-style bathroom and master bedroom doors
- Residential-height master bed
- 82-inch slideout height
- 84-inch-tall interior doorways
- Interior LED lighting
- Recessed LED lights in kitchen area
- Living room throw pillows
- Upgraded reading lights in master bedroom
- Upgraded living room furniture style with all new décor

- Decorative dinette ceiling light
- Reed-glass insert on select cabinets
- Crown molding on kitchen overhead cabinets
- Deluxe bar stools (select models)
- Backup/security camera prep

## CUSTOMER VALUE PACKAGE

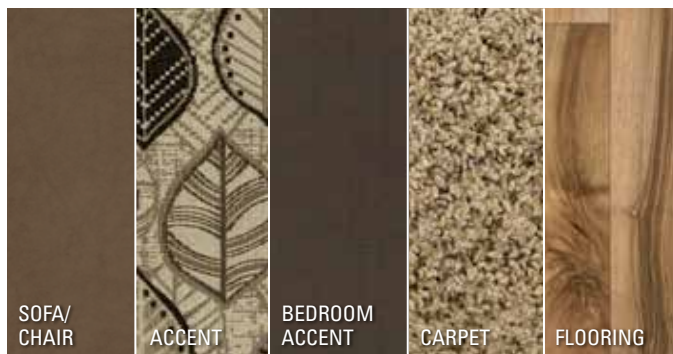
- 15,000-BTU central A/C
- 30-pound propane bottles with new cover
- Bath skylight
- CD/DVD with MP3 input and Bluetooth
- Manual stabilizer jacks
- 30-inch microwave
- Power vent in bathroom
- Quilted bedspread
- Sink covers (2)
- Tub surround
- Water heater bypass

## OPTIONS

- Adjustable-pitch electric patio awning with LED light
- Slideout awnings
- Thermal-pane tinted safety-glass windows
- Fiberglass sidewalls
- King bed
- Second A/C in bedroom
- Thermal Package
- Solid-surface kitchen countertops
- Stainless steel kitchen appliances
- Desk chair (40BHTS)

## JAY FLIGHT BUNGALOW INTERIOR DÉCOR

### ALMOND



### HAVANA



### JAVA



### MEADOW



# LET'S JAYCO—AND LEAVE OUR WORRIES BEHIND.

We know that your family fun rides on our commitment to quality. So we go the extra mile to make products that last—and stand behind them longer than anyone in the business.



## THE JAYCO DIFFERENCE

When you go with Jayco, you get one of the industry's strongest frames and rock-solid construction.

**1. Hand-tucked and glued fiberglass insulation** increases the insulation value near the 2-inch x 2-inch wooden studs; competitors use a blanket-insulation technique

**2. An optional fiberglass package** offers a smooth, sleek look; front walls are vacuum-bonded for added durability, while the sidewalls and rear walls are pinch rolled, for an affordable combination

**3. Magnum Truss Roof System** withstands 4,500 pounds—50 percent more than other roofs; by using  $\frac{3}{8}$ -inch plywood decking (n/a on Jay Flight SLX) at every seam, we offer higher durability than competitors' stapled construction; a one-piece, sidewall-wrapped DiFlex II material provides the ultimate in leak protection

**4. Durable floors** feature  $\frac{5}{8}$ -inch tongue-and-groove plywood (n/a on Jay Flight SLX) on 2-inch x 3-inch wooden joists, wrapped with a protective moisture barrier to keep the elements at bay

**5. Galvanized steel wheel wells**, not found on competing models, reduce heat loss and prevent damage in case of road debris

## JAYCO'S ROOF **VS** OTHER ROOFS

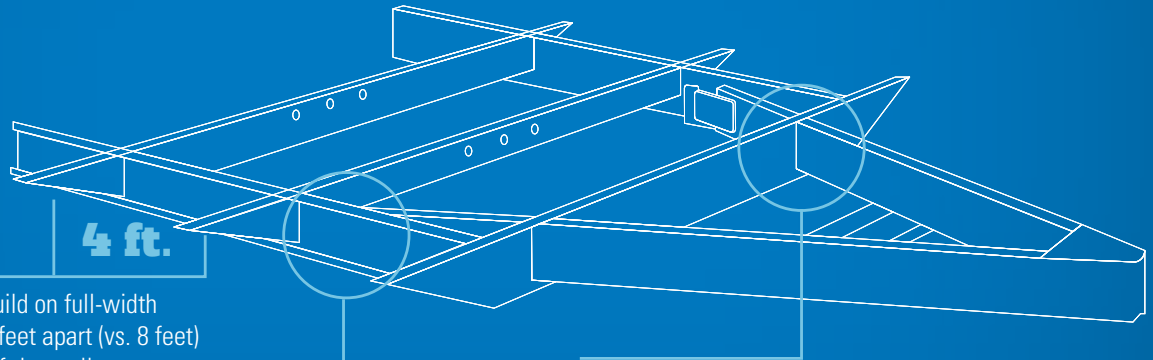


4,500 POUNDS ON A JAYCO ROOF VS. OTHER ROOFS

THE MAGNUM TRUSS ROOF SYSTEM  
**50 percent stronger**

# WE START WITH ONE OF THE INDUSTRY'S **strongest** foundations

Many competitors modify or weld stock frames, which can weaken the integrity of your foundation. Jayco's custom-manufactured frames offer higher strength and durability.



**Full-width outriggers:** We build on full-width outriggers that are spaced 4-6 feet apart (vs. 8 feet) to better support the weight of the wall.

**I-class cambered structural steel I-beams:** Jayco uses a unique molded, one-piece design to prevent the unit from twisting; competing three-piece I-beams can warp over time at the welded seams.

**Integrated A-frame:** The A-frame runs through the main frame, preventing the hitch from buckling—a common issue in competing tack-welded designs; seasonal travel trailers have a detachable hitch in lieu of an integrated A-frame.

Learn more at [StrongFoundation.Jayco.com](http://StrongFoundation.Jayco.com)



## JAY FLIGHT BUNGALOW EXCLUSIVE

**6. A unique residential-style atrium profile** creates a more home-like feel; vented windows and a 60-inch patio door maximize your comfort

**7. A detachable hitch** lets you remove the hitch during long-term stays

# JAY FLIGHT INTERIOR DÉCOR

## CASHEW



## COFFEE



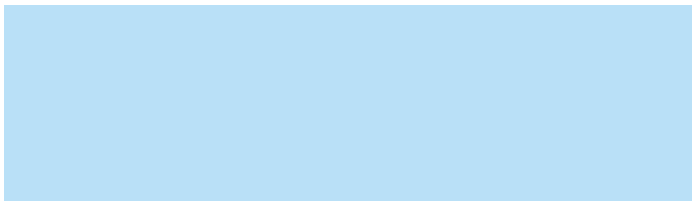
## MINERAL



## SHADOW



### Meet your Jayco Dealer



We work hard—so you can play hard. From finding the perfect Jayco for your family to providing flexible financing options and full-service support, we're here to help.

**2**  
YEAR  
WARRANTY

**FREE**  
ROADSIDE  
ASSISTANCE

Travel with confidence, with our industry-leading, bumper-to-hitch limited warranty and a year's access to Coach-Net™—the country's largest RV emergency road service.

For a copy of our 2-year limited warranty with full terms and conditions, please contact your local Jayco dealer.

**eco** advantage™

**Jayco's long-term commitment to generations of family fun**  
After four years of increased efforts to eliminate waste, conserve energy and increase recycling, we've come a long way in building RVs that are not only better for your family—but also better for the planet.  
**Learn more at [Jayco.com/EcoAdvantage](http://Jayco.com/EcoAdvantage)**

### Follow Jayco



Jayco, Inc., P.O. Box 460, Middlebury, IN 46540, [www.jayco.com](http://www.jayco.com) See dealer for further information and prices. All information in this brochure is the latest available at the time of publication approval. Jayco reserves the right to make changes and to discontinue models without notice or obligation. Photos in this brochure may show optional equipment and props for photography purposes. RVs built for sale in Canada may differ to conform to Canadian codes. ©2015 Jayco, Inc. 0116-30K Printed in U.S.A.