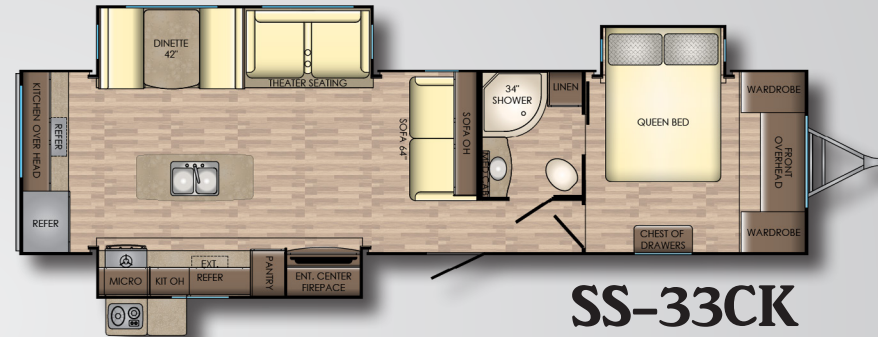
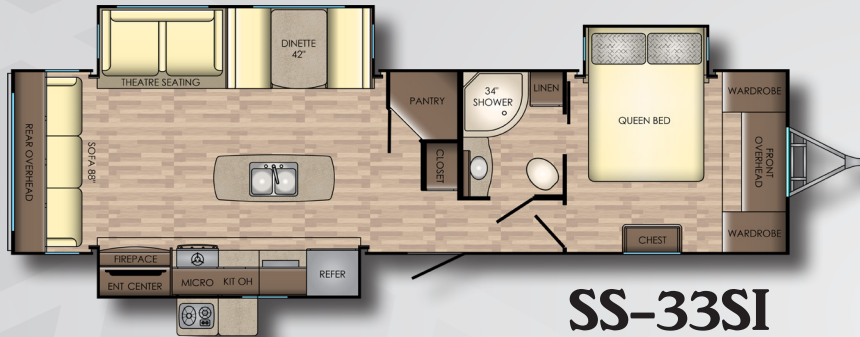
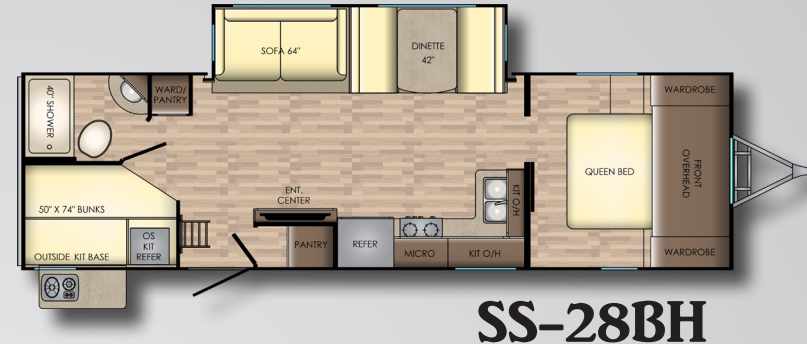
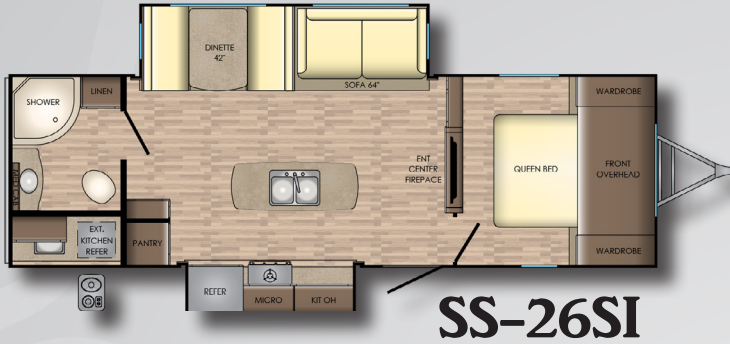


# SUNSET TRAIL



**CROSSROADS**  
*Recreational Vehicles*

# GRAND RESERVE



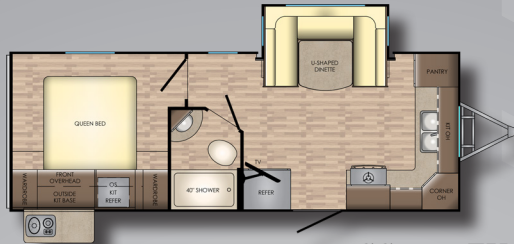
\* SEE WEBSITE FOR ADDITIONAL SPECS

MODEL	26SI	28BH	33SI	33CK	200RD	210FK	222RB	239BH	250RK	253RB	262BH	271RL	289QB	291RK	331BH	336BH
DRY WEIGHT	5986	5942	7608	7608	4108	4570	4734	4782	6026	5356	5318	5308	5598	5686	7186	6752
HITCH	740	656	954	854	504	616	524	526	622	554	568	624	768	680	936	850
LENGTH	31' 1"	33' 8"	37' 11"	38' 5"	24' 11"	25' 11"	26' 11"	27' 5"	29' 11"	29' 11"	30' 10"	31' 1"	32' 9"	33' 4"	37' 6"	37' 6"
EXT. HEIGHT W/ A/C	11' 1"	11' 1"	11' 3"	11' 3"	11' 1"	11' 1"	11' 1"	11' 1"	11' 2"	11' 1"	11' 1"	11' 1"	11' 1"	11' 1"	11' 2"	11' 2"
FRESH WATER	45 Gal	45 Gal	45 Gal	45 Gal	43 Gal	43 Gal	45 Gal	45 Gal	45 Gal	45 Gal	45 Gal	45 Gal	45 Gal	45 Gal	45 Gal	45 Gal
BLACK WATER	30 Gal	30 Gal	30 Gal	30 Gal	30 Gal	30 Gal	30 Gal	30 Gal	30 Gal	30 Gal	30 Gal	30 Gal	30 Gal	30 Gal	60 Gal	30 Gal
GRAY WATER	60 Gal	60 Gal	60 Gal	60 Gal	30 Gal	60 Gal	30 Gal	30 Gal	60 Gal	30 Gal	30 Gal	30 Gal	30 Gal	60 Gal	60 Gal	30 Gal

# SUPER LITE



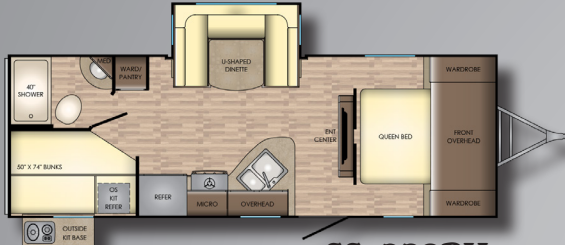
SS-200RD



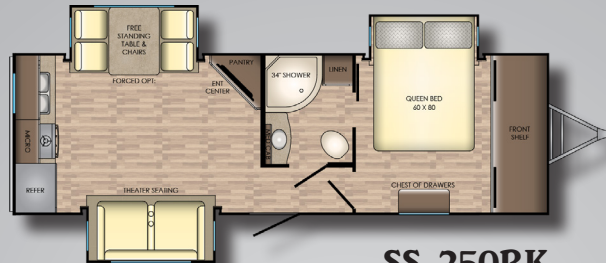
SS-210FK



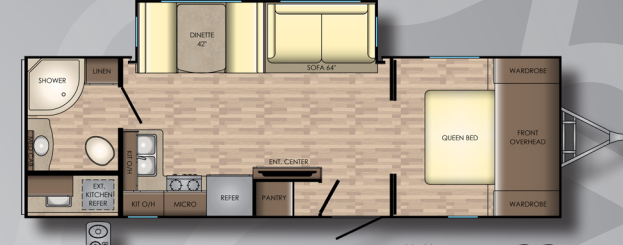
SS-222RB



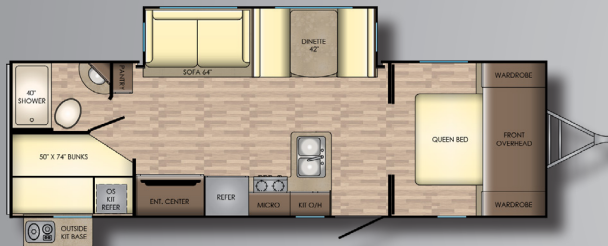
SS-239BH



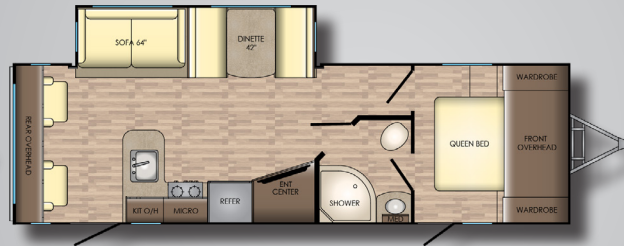
SS-250RK



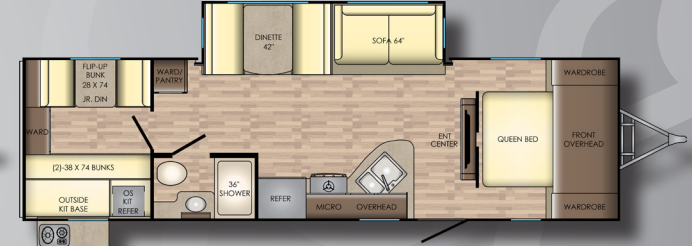
SS-253RB



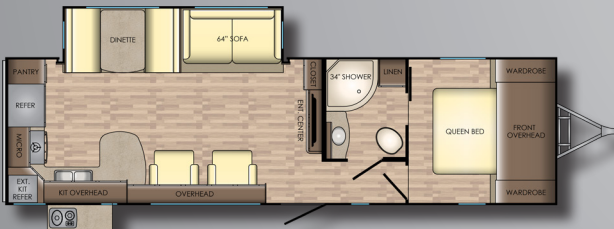
SS-262BH



SS-271RL



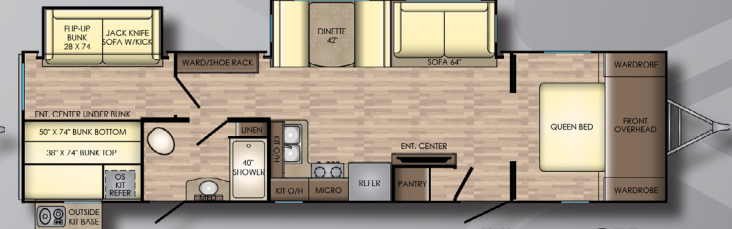
SS-289QB



SS-291RK



SS-331BH



SS-336BH



336BH  
253RB Front to Back



291RK Kitchen



253RB Back to Front



331BH Back to Front



# SUNSET T R A I L



PINE VALLEY



OAK HILL

## STANDARD EXTERIOR

- 6 Sided Aluminum Structure
- Aluminum Entry Step - 9" Drop
- Aluminum Wheels
- Black Tank Flush
- Quick Recovery 6 Gal G/E DSI Water Heater (17.8 gal/hr)
- Tinted Windows
- Outside Speakers
- 13,500 BTU Ducted Air Conditioner
- Electric Awning w/ LED Strip
- Manual Stab Jacks
- Swing-out Grab Handle
- Dexter EZ Lube Axles
- Nitrogen Filled Radial Tires
- HD Digital TV Antenna
- Satellite Prep
- 30" Friction Hinge Entry Door
- Front diamond Plate
- Articulating TV Bracket

- 20# LP Bottles
- Backup Camera Prep
- Spare Tire
- Detachable Power Cord
- Pass-through Storage Area w/ Motion LED & Slam Latch Doors
- Painted Fiberglass Front Cap w/ Clear Shield
- Solar Prep
- Power Tongue Jack
- Outside Camp Kitchen (n/a 200RD-271RL)
- Outside Water Port

## STANDARD INTERIOR

- Stainless Steel Microwave
- Glass Top Flush Mount Range Cover
- Gas Oven
- Stainless Steel Sink w/ Cover
- Solid Surface Countertops in Kitchen
- Wood Blinds in Living Area

- Motion Sensor Light at Front Door
- Upgraded Insulation - Reflective Foil
- 6 or 7 ft<sup>3</sup> Double Door Refrigerator
- AM/FM/CD/DVD/Stereo w/ Bluetooth
- Designer Privacy Shades
- Pocket Doors Separating Bedroom (VBM)
- Docking Station: USB Port & 110 Plug
- Skylight In Shower
- Detector for Smoke, Carbon Monoxide, and LP Gas
- Fire Extinguisher
- Congoleum Flooring w/ 3 Yr Warranty Against Cold Cracking
- LED Interior Lights
- 60x80 Queen Mattress
- Decorative Bedspread
- Glass Shower Enclosure (VBM)
- Tri-fold Sleeper Sofa
- Ceramic Backsplash

## OPTIONS

- Free Standing Table w/4 Chairs (Replaces Dinette Booth)
- Theater Seats IPO Tri-fold Sofa (253RB, 262BH, 331BH, 336BH, 26SI, & 28BH)
- 15,000 BTU Main A/C
- 50 Amp Service w/ 2nd A/C Prep
- 39" LED TV
- RVQ Grill - N/A on Grand Reserve

## GRAND RESERVE UPGRADES

- Secure Stance Steps
- Folding Bike Rack
- Fireplace
- Auto-Level w/ Smart jack
- 7 or 8 ft<sup>3</sup> Refrigerator
- 50 Amp Service
- Automotive Windshield in Front Cap

\*VBM - Varies by Model

## DIVERSITY MEETS ELEGANCE

www.crossroadsrv.com • 1140 W. Lake St Topeka, IN 46571 • (260) 593 - 3850

DISCLAIMER: Product information is as accurate as possible as of the date of publication of this brochure. All features, floor plans, and specifications in this brochure are subject to change without notice. Please also consult CrossRoads' web site at www.crossroadsrv.com for more current product information and specifications. Tow Vehicle Disclaimer. CAUTION: Owners of CrossRoads recreational vehicles are solely responsible for the selection and proper use of tow vehicles. All customers should consult with a motor vehicle manufacturer or their dealer concerning the purchase and use of suitable tow vehicles for CrossRoads products. CrossRoads disclaims any liability or damages suffered as a result of the selection, operation, use or misuse of a tow vehicle. CROSSROADS' LIMITED WARRANTY DOES NOT COVER DAMAGE TO THE RECREATIONAL VEHICLE OR THE TOW VEHICLE AS A RESULT OF THE SELECTION, OPERATION, USE OR MISUSE OF THE TOW VEHICLE. REFERENCE CROSSROADS RV COMPANY OWNERS MANUAL FOR LIMITED WARRANTY DETAILS. \*Length is defined as the distance from the centerline of hitch pin/coupler to rear bumper of trailer.



Feb. 1, 2018