

Prism

By Coachmen



CLASS C MOTORHOMES

PRISM PROFILE

PRISM



PRISM

PRISM PROFILE INTERIOR FEATURES



24G

Standard entertainment package features a power wing jack antenna with a 12 volt LCD TV and 12 volt DVD/CD stereo with speakers and subwoofer to enjoy movies and music whether traveling or RVing.

Modern kitchen with 3-way refrigerator, 2-burner cooktop with glass cover, convection oven together with upgraded countertops, upgraded faucet with pullout sprayer and recessed composite sink.

AM/FM/CD radio with built-in backup camera These great features keep you aware of your surroundings and make parking a breeze. Sirius satellite and navigation available.

Deluxe Fantastik climate controlled fan in living room.

Day/night roller shades Easy to use, slow rise, rattle-free, heavy duty roller shades provide light blocking and light filtering.

24G Island queen bed at the push of a button is 60" wide and provides the comfort and convenience of a rear queen island bed in a motorhome under 25ft. 24J model includes an 80" long corner queen bed providing ample sleeping and comfort.

3-way refrigerator for the most efficient use of power while you RV. Operates on 110V, 12V or LP.

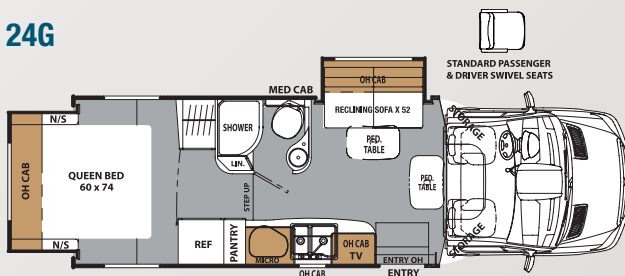
Smart design bathroom features standalone shower and maximum storage without sacrificing valuable living space.

Standard recliner sofa (24G) also has dual foot rest recliners for relaxing at the end of a day's travel.

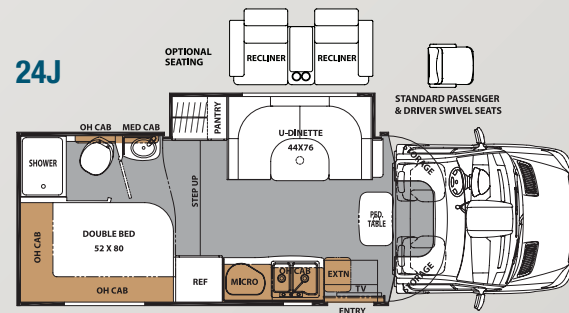
Cockpit swivel seats are standard on both the driver and passenger seats for added seating when parked.

LED ceiling lighting throughout for long life and efficient use of battery power.

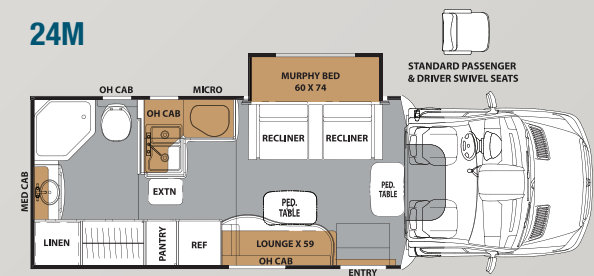
24G



24J



24M



PRISM PROFILE STANDARD AND OPTIONAL FEATURES

STANDARD

WARRANTY

Motorhome – 12 mo./
12,000 mile limited warranty
Chassis Warranty – See Chassis
Owners Manual
Travel Easy Roadside Assistance

EXTERIOR/CONSTRUCTION/ CHASSIS

Deluxe Chassis Package
Upgraded Leatherette Cockpit Seats
Driver & Passenger Air Bags
Cruise Control
Tilt Steering Wheel
Dash Air Conditioning
Power Windows & Locks
Exterior Upgraded Mirrors w/Remote
Azdel "Super Lite" Composite Sidewall
Vacu-Bond Laminated 2" Aluminum Floor
Vacu-Bond Laminated 2" Aluminum
Sidewalls
Vacu-Bond Laminated Crowned Aluminum
Roof w/TPO Exterior Surface
Vinyl Graphics Package
Roto-cast Rear Warehouse Trunk Box
w/Plasti-Cote Side Boxes
LED Rear Storage Trunk Light
Slam Latch Trunk Doors
Molded Fiberglass Front Cap w/Sunroof
& Shade & LED Accent Lighting
Molded Fiberglass Rear Cap
Fiberglass Running Boards
Fiberglass Wheel Skirts
Upgraded Exterior Range Vent
Rear Exterior Roof Ladder (N/A 24G)
Spare Tire
Back-up Camera
Towing Hitch w/7-way Plug
Hellwig Swaybar

INTERIOR APPOINTMENTS

Serenity Ash Woodgrain Cabinetry
Hardwood Cabinet Doors & Drawers Fronts
Glass Insert Cabinet Doors (in Select Areas)
Cabinet Hardware – Black
Congoleum "Designer Series" Flooring
Throughout
Vinyl Soft Touch Ceiling
U- Dinette (24J)
Sofa w/Dual Recliner Foot Rests
& Pedestal Table (24G)
Power Reclining Chairs
w/Center Console (24M)
Contoured Lounge Chair (24M)
Upgraded Seating Foam Pak & Sew Style
Single Child Tether at Forward Facing
Dinette (24J)
Upgraded "Shaker Style" Bath Door
Upgraded Slideout Facer Board
Upgraded Interior Grab Handle
at Entrance Door
Vinyl Padded Up & Angle Pads
Magazine Rack above Entrance Door
(N/A 24J)
Powered Fantastik Fan in Living Room Area
Tinted Radius Slider Windows

INTERIOR EQUIPMENT

Powered Jack Wing Antenna
LP Leak Alarm
Smoke Detector
Carbon Monoxide Detector
Fire Extinguisher
Bedroom TV Prep (N/A 24M)
24" LCD 12V TV w/DVD & Speakers
Pre-wired for Satellite Dish Thru Coax Input

GALLEY

Convection Oven
Satin Nickel Kitchen Faucet w/Sprayer
Kitchen Flip-up Countertop Extension (24J)
Upgraded Decorative Kitchen
Backsplash Panel
High Resolution Laminated Countertops
Double Bowl Kitchen Sink & Sink Cover
Power Lighted Low Profile Range Hood

BATH AND WATER

Water Works Panel with Winterization
& Black Tank Flush
Waste Termination Center Easy Access Door
Exterior Shower
Molded Plastic Shower Pan & Surround
Shower Curtain & Curved Rod (24G)
Glass Shower Door (24J)
Satin Nickel Shower Head & Faucet
Shower Skylight
Single Bowl Bathroom Sink
Satin Nickel Single Lever Bathroom Faucet
Bathroom Vanity Mirror w/Makeup
Light Bar
Towel Ring, Toilet Paper Holder &
Robe Hooks
Porcelain Foot Flush Toilet
Attwood 6-Gallon Gas DSI Water Heater
Power Bath Vent Fan
Demand Water Pump

SLEEPING

Island Queen Bed w/Standard Mattress
60" x 74" (24G)
Corner Queen Bed w/Standard Mattress
51" x 80" (24J)
Power Murphy Bed w/Upgrade Mattress
(24M)
Bedsprad (24J)
Nightstands (N/A 24M)
Bedroom Privacy Curtain (24G, 24J)
Padded Headboard (24J)

ELECTRICAL/HEATING/AC

Bed Area 110V CPAP Ready Area
& 12V/USB Charging Station
Exterior Illuminated Acrylic Safety
Grab Handle
Exterior LED Patio Light
Systems Command Center
"Easy Access" Auxiliary Battery in Step-well
Wall Mounted Thermostat
GFI Circuits (Kitchen, Bathroom, Exterior)
Dual Auxiliary Battery
Auxiliary Battery Disconnect
"Even Cool" Roof Air Ducting System
13,500 BTU Low Profile Ducted Roof
Air Conditioner
20K BTU Ducted Furnace
30 Amp Power Cord
55 Amp Electronic Converter

OPTIONAL

STAND ALONE OPTIONS

24" LCD TV w/DVD – Bedroom (N/A 24M)
Exterior Camp Kitchen Table (N/A 24M)
Upgrade Serta Mattress (24J)
Upgrade Folding Mattress (24G)
15,000 BTU Low-Profile Ducted Air
Conditioner w/Heat Pump
3.2 KW Onan Diesel Generator (w/Auto
Transfer Switch)
Camping Cozy Package
(Dual Pane Tinted Windows,
Tank Pads, Upper Tank Valves)
Heated Tank Pads
Side View Cameras
Aluminum Rims
Slideout Awning – Rear (24G – Must Select
Side Slideout Awning)
Slideout Awning – Side
2-Point Hydraulic Jacks
Fold Down Cabover Sleeping Bunk
w/32" 12 V LCD TV
Touch Screen Dash Radio w/Back-up
Monitor & GPS Navigation

DÉCOR OPTIONS

Champagne
Cobblestone
Flagstone

BANNER PACKAGE

(Mandatory Option)

Hi-gloss Color Infused "Carmel" Lamilux
4000 Sidewalls
Bluetooth Touch Screen Radio w/Back-up
Monitor & Sirius Radio
Power Awning w/Vinyl Weather Guard
Exterior Solar Panel Connection ("Furrion"
Solar Panel Sold Separate)
Pop-up Kitchen Receipt & USB Ports
Stainless Steel Wheel Liners
3.6 KW Onan LP Generator
Roller Day/Night Window Shades
Dometic Euro Style 3-way Refrigerator
Euro Style 2-Burner Cook top w/Glass Cover
LED Taillights & Running Lights
LED Ceiling Lights Throughout
Exterior Entertainment Center
w/24" LCD TV, DVD & Stereo
Wood Grain Dash
Upgraded Swivel Driver & Passenger Seats
Power Skylight/Roof Vent
Roller Bearing Drawer Guides Throughout
Rear Manual Stabilizer Jacks
Exterior Windshield Privacy Cover

*Due to continuous improvement,
Standards and Options subject
to change without notice.*



24M



24G



24M



24G



24M

PRISM LE INTERIOR FEATURES



Fully equipped kitchen with ample storage Two door refrigerator/freezer, contemporary and durable deep bowl sink with high rise faucet, pantry with drawers, and pots and pans drawer for all your storage needs.

Upgraded High Resolution laminate countertops.

Wrap around dinette with seat belts at every occupancy seat.

AM/FM/CD radio with built-in backup camera with optional Sirius satellite and navigation. This great feature keeps you aware of your surroundings and makes parking a breeze.

Comfortable sleeping with the standard or optional upgraded Serta mattress provides more sleeping surface.

Convenient cooking options to compliment the way you live — your choice of a standard microwave or optional convection microwave.

Day/night roller shades Easy to use, slow rise, rattle-free, heavy duty roller shades provide light blocking and light filtering.

12 Volt LCD TV & DVD offers optimal viewing whether traveling or RVing (optional).

Coachmen's Even Cool A/C with radius-cornered Amoco insulated ducts ensure maximum, consistent air flow.

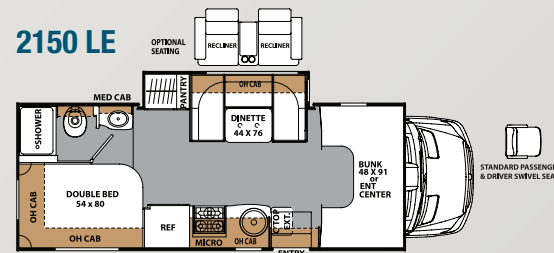
Designer flooring has a contemporary look with non-skid surface that resists cold-cracking.

Cabover bunk is 48"x91" making it comfortable for slumber and extra storage space when not in use, including a child safety net and ladder.

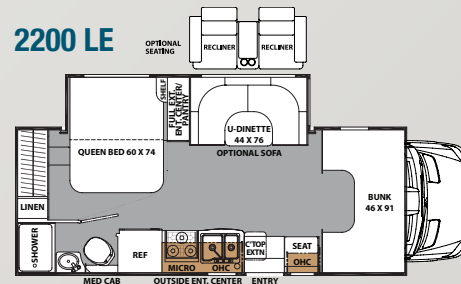
Slide-in-a-Slide (2200) provides mid-ship TV viewing and bedroom privacy.



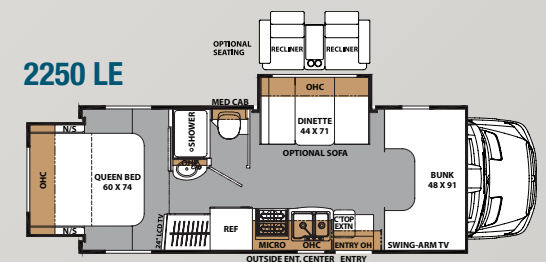
2150 LE



2200 LE



2250 LE



PRISM LE STANDARD AND OPTIONAL FEATURES

STANDARD

WARRANTY

Motorhome - 12 mo./
12,000 mile limited warranty
Chassis Warranty - See Chassis
Owners Manual
Travel Easy Roadside Assistance

EXTERIOR/CONSTRUCTION/ CHASSIS

Deluxe Chassis Package
Driver & Passenger Air Bags
Cruise Control
Tilt Steering Wheel
Dash Air Conditioning
Power Windows & Locks
Exterior Upgraded Mirrors w/Remote
Azdel "Super Lite" Composite Sidewall
Vacu-Bond Laminated 2" Steel Floor
Vacu-Bond Laminated 2" Aluminum
Sidewalls
Vacu-Bond Laminated Crowned
Aluminum Roof
w/TPO Exterior Surface
Vinyl Graphics Package
Roto-cast Rear Warehouse Trunk Box
w/Plasti-Cote Side Boxes
Power Double Entrance Step
Upgraded Exterior Range Vent
Rear Steel Tube Bumper
Hellwig Swaybar
Back-up Camera

INTERIOR APPOINTMENTS

Serenity Ash Woodgrain Cabinetry
Hardwood Cabinet Doors
& Drawers Fronts
Glass Insert Cabinet Doors
(in Select Areas)
Cabinet Hardware - Black
Congoleum "Designer Series" Flooring
Throughout

U-Dinette (2150LE, 2200LE)
Booth Dinette (2250LE)
Single Child Tether at Forward
Facing Dinette
Upgraded "Shaker Style" Bath Door
Interior Safety Grab Handle
by Entrance Door
Vinyl Padded Up & Angles
Tinted Radius Slider Windows -
Safety Glass

INTERIOR EQUIPMENT

Jack Wing TV Antenna
LP Leak Alarm
Smoke Detector
Carbon Monoxide Detector
Fire Extinguisher
Bedroom TV Prep (N/A 2200LE)
Power Slideout Entertainment Center
w/ Swivel 32" LCD TV, Stereo,
Speakers, Sound Bar, Pantry

GALLEY

Residential Size Microwave Oven
Flush Mount, Double Door Refrigerator
w/Wood Grain Door Inserts
Single Bowl Kitchen Sink w/Cover
(2150LE)
Double Bowl Kitchen Sink w/Cover
(2200LE, 2250LE)
Satin Nickel Kitchen Faucet
High Resolution Laminate Countertops
Power, Lighted Range Hood
Kitchen Flip-up Countertop Extension
Tile Wall Border

BATH AND WATER

Water Works Panel
w/Winterization & Black Tank Flush
Waste Termination Center Easy
Access Door
Exterior Shower
Molded Plastic Shower Pan & Surround
Glass Shower Door

Satin Nickel Shower Head & Faucet
Shower Skylight
Single Bowl Bathroom Sink
Satin Nickel Single Lever
Bathroom Faucet
Bathroom Medicine Cabinet & Vanity Mirror
Towel Ring, Toilet Paper Holder
& Robe Hooks
Porcelain Foot Flush Toilet
Attwood 6-Gallon Gas DSI Water Heater
Power Bath Vent Fan
Demand Water Pump

SLEEPING

Full Bed w/Standard Mattress
54" x 80" (2150LE)
Queen Bed w/Standard Mattress
60" x 74" Flip Over (2250LE, 2200LE)
Bedspread
Privacy Drape - Lower Cab
Privacy Drape - Bedroom
(2150LE, 2200LE)
Bedroom Slider Door (2250LE)
Privacy Drape & Track Cover - Cabover
Cab over Bunk 48" x 90"
Child Safety Net & Ladder
(N/A w/Front Entertainment Center)

ELECTRICAL/HEATING/AC

Bed Area 110V CPAP Ready Area
& 12V USB Charging Station
Exterior TV Ready Compartment
Exterior LED Patio Light
Systems Command Center
"Easy Access" Auxiliary Battery in
Step-well
Wall Mounted Thermostat
GFI Circuits (Kitchen, Bathroom, Exterior)
Auxiliary Battery
Auxiliary Battery Disconnect
"Even Cool" Roof Air Ducting System
(N/A 20CB, 21QB)
13,500 BTU Ducted Roof Air Conditioner
20,000 BTU Ducted Furnace

Onan 3.6KW LP Generator
Exterior Solar Panel Connection
("Furion" Solar Panel Sold Separate)
30 Amp Power Cord
55 Amp Electronic Converter

OPTIONAL

STAND ALONE OPTIONS

24" LCD TV w/DVD - Coach (N/A 2200LE)
13.5" LCD TV w/DVD - Bedroom
(N/A 2200LE)
Front Entertainment Center - 32" LCD TV,
DVD & Stereo (N/A 2200LE)
Exterior Entertainment Center
w/24" LCD TV, DVD & Stereo
Touch Screen Dash Radio w/Back-up
Monitor & GPS Navigation
Upgrade Serta Mattress (2150LE)
Upgrade Folding Mattress
(2250LE, 2200LE)
Convection Microwave
Sofa & Pedestal Table (in Place of Dinette)
Dual Recliners (in Place of Dinette)
Power Vent Fan - Cabover
Heated Holding Tanks
Dual Auxiliary Coach Batteries
Exterior Windshield Cover
Camping Cozy Package
(Dual Pane Tinted Windows,
Tank Pads, Upper Tank Valves)
2-Point Hydraulic Jacks
3.2 KW Onan Diesel Generator
(w/Auto Transfer Switch)

DÉCOR OPTIONS

Champagne
Cobblestone
Flagstone

LEAD DOG PACKAGE (Mandatory Option)

Hi-gloss Color Infused "Carmel" Lamilux
4000 Sidewalls
Bluetooth Touch Screen Radio
w/Back-up Monitor & Sirius Radio
Power Awning w/Vinyl Weather Guard
LED Taillights & Running Lights
LED Ceiling Lights Throughout
Pop-up Kitchen Receipt & USB Ports
Stainless Steel Wheel Liners
3.6 KW Onan LP Generator
3,500 lb. Towing Hitch w/7-way Plug
Rear Exterior Roof Ladder (N/A 2250LE)
Spare Tire
Upgraded Swivel Driver & Passenger Seats
Roller Bearing Drawer Guides Throughout
Attwood 3-Burner Cooktop w/Oven
Child Safety Net & Ladder
(N/A w/Front Entertainment Center)
Roller Day/Night Window Shades

*Due to continuous improvement,
Standards and Options subject
to change without notice.*

INTERIOR DÉCOR PRISM AND PRISM LE



CHAMPAGNE



COBBLESTONE



FLAGSTONE

EXTERIOR OPTIONS

STANDARD COLOR INFUSED FIBERGLASS



(Also available with painted color match cab)

OPTIONAL FULL BODY PAINT



RED COBALT



BLUE COBALT



2250LE

PRISM PROFILE EXTERIOR FEATURES

Features A through E shown below available on Prism 24G, 24J and 24M:

- A** Sirius satellite and navigation optional with AM/FM/CD radio and backup monitor with dash speakers. **B** LED interior lights. **C** Skylight bonded into molded front fiberglass cap. **D** Roller day/night shade provides privacy, blocks out light at night and helps keep your coach cool inside on warmer days.



PRISM Exterior Features

- 1 The Mercedes Sprinter chassis is easy on fuel and on the eyes. It also delivers the great ride and driveability Mercedes is famous for.
- 2 A molded aerodynamically styled front cap with LED lights and angled wing walls reduces wind resistance and adds a polished automotive look.
- 3 Tinted windows block out the sun and the heat while adding a sleek exterior look.
- 4 The One Touch power awning is easy to open and close and comes with adjustable arms for more shade or rain water run off.
- 5 Beneath the stars or the full length awning, enjoy your favorite movies or music and fresh air at the same time with the outside entertainment system.
- 6 The exterior storage with upgraded slam latches provide you with multiple access doors to exterior storage space.
- 7 LED tail and marker lights for long-lasting safety.
- 8 Prepare meals and enjoy the family at the same time using the exterior camp table. (Optional)
- 9 Sleep safely and peacefully with the exterior privacy windshield cover.
- 10 Rear stabilizers create a secure and stable feeling within the motorhome.
- 11 Color-infused high gloss fiberglass with Azdel™ SuperLite substrate sidewalls are lightweight, durable and resistant to moisture. Virtually eliminates de-lamination.



11



Not Pictured: 20-gallon (85 lbs.) LP tank is larger than the competition.

PRISM MOTORHOMES

Whether exploring on a weekend getaway or traveling across the country, Prism gets you there in style. It's the perfect marriage between experience, dependability and value from the Industry's premier maker with the economy and prestige of the Mercedes diesel chassis. The Prism is a luxurious, easy to drive, multi-use touring vehicle that provides unique styling and amenities. From the interior's solid surface counter tops, soft touch ceiling, residential flooring and versatile interior storage to the multiple access doors to exterior storage space, LED running lights, tinted windows and aerodynamic, stylish full fiberglass cap (Prism Profile Series), Prism is ideal for short or long trips. As one of the top selling brands in the nation, Coachmen has been providing generations a product they can rely on for over 50 years.

PRISM LE Exterior Features

- 1 The Mercedes Sprinter chassis is easy on fuel and on the eyes. It also delivers the great ride and driveability Mercedes is famous for.
- 2 A power entry step automatically deploys and retracts when opening or closing the door allowing for easy entry and exit.
- 3 The One Touch power awning is easy to open and close and comes with adjustable arms for more shade or rain water run off.
- 4 Slide room awnings protect your slides from the elements and keep them free of debris.
- 5 3.6 KW Onan LP generator provides full power for tailgating or while dry camping.
- 6 Watch your favorite movies while still enjoying the fresh air with the outside entertainment system. (Optional)
- 7 The "warehouse" exterior storage provides you with a ton of exterior space that is great for both long and short term stays.
- 8 Sleep safely and peacefully with the exterior privacy windshield cover. (Optional)
- 9 Superior fresh water capacity – on average 20% more than the competition.
- 10 Color-infused high gloss fiberglass with Azdel™ Superlite substrate sidewalls are lightweight, durable and resistant to moisture. Virtually eliminates de-lamination.

Not Pictured: 20-gallon (85 lbs.) LP tank is larger than the competition.



PRISM SPECIFICATIONS

| MODEL | 24J | 24G | 24M | 2150 LE | 2200 LE | 2250 LE |
|------------------------------|---------------|---------------|---------------|---------------|---------------|---------------|
| Chassis | 3500 Sprinter | 3500 Sprinter | 3500 Sprinter | 3500 Sprinter | 3500 Sprinter | 3500 Sprinter |
| Engine | V6 3.0L | V6 3.0L | V6 3.0L | V6 3.0L | V6 3.0L | V6 3.0L |
| Horse Power | 188 | 188 | 188 | 188 | 188 | 188 |
| Torque | 325 | 325 | 325 | 325 | 325 | 325 |
| Wheel Base | 170" | 170" | 170" | 170" | 170" | 170" |
| GVWR (lbs.) | 11,030 | 11,030 | 11,030 | 11,030 | 11,030 | 11,030 |
| GCWR (lbs.) | 15,250 | 15,250 | 15,250 | 15,250 | 15,250 | 15,250 |
| UVW (approx. lbs.) | 9,458 | 9,305 | 9,463 | 9,645 | 9,834 | 9,757 |
| CCC (approx. lbs.) | 1,572 | 1,725 | 1,560 | 1,385 | 1,196 | 1,273 |
| GAWR Front (lbs.) | 4,410 | 4,410 | 4,410 | 4,410 | 4,410 | 4,410 |
| GAWR Rear (lbs.) | 7,720 | 7,720 | 7,720 | 7,720 | 7,720 | 7,720 |
| Interior Height | 6' 7" | 6' 7" | 6' 7" | 6' 10" | 6' 10" | 6' 10" |
| Exterior Width | 7' 7" | 7' 7" | 7' 7" | 7' 11" | 7' 11" | 7' 11" |
| Exterior Height (with A/C) | 10' 8" | 10' 8" | 10' 8" | 11' 7" | 11' 7" | 11' 7" |
| Exterior Length (with Hitch) | 24' 10" | 24' 10" | 24' 10" | 25' 0" | 25' 0" | 25' 0" |
| Hitch Weight (lbs.) | 3,500 | 3,500 | 3,500 | 3,500 | 3,500 | 3,500 |
| Fuel Capacity (gal.) | 26 | 26 | 26 | 26 | 26 | 26 |
| LP Capacity (lbs.) | 85 | 85 | 85 | 85 | 85 | 85 |
| Fresh Water Capacity (gal.) | 30 | 30 | 35 | 50 | 38 | 43 |
| Water Heater Capacity (gal.) | 6 | 6 | 6 | 6 | 6 | 6 |
| Grey Tank Capacity (gal.) | 28 | 29 | 28 | 28 | 28 | 29 |
| Black Tank Capacity (gal.) | 32 | 28 | 32 | 28 | 28 | 27 |
| Exterior Storage (cu. ft.) | 42 | 41 | 33 | 88 | 52 | 52 |
| Awning Length | 15' | 15' | 13' 6" | 16' | 16' | 16' |

GVWR (Gross Vehicle Weight Rating) is the maximum permissible weight of the unit when fully loaded. It includes all weights, inclusive of all fluids, occupants, cargo, optional equipment and accessories. For safety and product performance do NOT exceed the GVWR.

GCWR (Gross Combined Weight Rating) is the maximum permissible loaded weight of your motor home and any towed trailer or towed vehicle. Actual GCWR of this vehicle may be limited by the sum of the GVWR and the installed hitch receiver maximum capacity rating; see hitch rating label for detail.

GAWR (Gross Axle Weight Rating) is the maximum permissible weight, including cargo, fluids, optional equipment and accessories that can be safely supported by each axle.

UVW (Unloaded Vehicle Weight) * is the typical weight of the unit as manufactured at the factory. It includes all weight at the unit's axle(s), including full fuel, all fluids and LP Gas. The UVW does not include cargo, fresh potable water, additional optional equipment or dealer installed accessories.

*Estimated Average based on standard build optional equipment.

CCC (Cargo Carrying Capacity) ** is the amount of weight available for fresh potable water, cargo, passengers, additional optional equipment and accessories. CCC is equal to GVWR minus UVW. Available CCC should accommodate fresh potable water (8.3 lbs per gallon). Before filling the fresh water tank, empty the black and gray tanks to provide for more cargo capacity.

** Estimated average based on standard build optional equipment

Each Coachmen motorhome is weighed at the manufacturing facility prior to shipping. A label identifying the unloaded vehicle weight of the actual unit and the cargo carrying capacity is applied to every Coachmen motorhome prior to leaving our facilities.

The load capacity of your unit is designated by weight, not by volume, so you cannot necessarily use all available space when loading your unit.

Actual towing capacity is dependent upon your particular loading and towing circumstances, which includes the GVWR, GAWR and GCWR as well as adequate trailer brakes. Please refer to the Operator's Manual of your vehicle for further towing information.



Your **PRISM** Dealer



**Travel Easy™
Roadside Assistance**

RVing is easier with Coachmen's Travel Easy™ Roadside Assistance provided FREE the first year of ownership to those who purchase a New Coachmen RV. Administered by Coach-Net, this service provides you with 24/7 operational, technical and emergency road service coverage. Also included is towing, fuel delivery, jump starts, lockout service, tire changes, mobile mechanic and unlimited technical assistance. Anywhere. Anytime. Travel Easy™ is the security of knowing that help is an easy phone call away.



**Free One Year Membership –
Coachmen Owners' Association**

Coachmen is proud to sponsor the largest manufacturer sponsored camping club in North America ... Coachmen Owners' Association (COA). COA provides a broad breadth of value propositions for our owners including: planned trips/ tours and rallies at bulk rate discounts, free trip routing, free campground directory, free Easy RVing magazine, theme park discounts, fuel discounts, mail forwarding, a dedicated COA web site, local and state club activities and Caravan Chapter membership opportunities. Most importantly, COA enhances the Coachmen ownership and RV lifestyle experience.

Every new Coachmen RV buyer is eligible for a 1 Year FREE membership in the Coachmen Owners' Association. It all adds up to an easy ownership experience!



Forest River, Inc. encourages our customers to purchase their Forest River products from a local dealership whenever possible for the following reasons:

- 1) Forest River, Inc. dealers are independently owned and operated businesses so priority service and scheduling is at their discretion and is often provided to customers that purchased their unit at that dealership.
- 2) Purchasing locally allows customers to establish meaningful relationships with a dealer, enhancing the RV experience through assistance with product questions, user tips or RV regulations for your state or country, and much more!
- 3) Canadian customers must meet requirements to bring an RV purchased out of the country to their home. These requirements may involve additional inspections and certifications, taxes and fees. Your local Canadian Dealer is a professional at meeting these requirements.
- 4) Scheduling timely warranty repairs and adjustments through a local dealership provides far greater flexibility and convenience to you, the customer!

It is the goal of Forest River, Inc. that all of our RV owners fully enjoy the RV experience and that customer satisfaction meets or exceeds their expectations!



Coachmen RV Owner "Digital Kit" App

Now you can have your Owners Manual with you wherever you are. Download our free App from iTunes and you'll have the information at your fingertips.



Learn More
Scan this barcode using a QR Reader on your smart phone to learn more about Forest River.



A Berkshire Hathaway company.

All information contained in this brochure is believed to be accurate at the time of publication. However, during the model year, it may be necessary to make revisions and Coachmen reserves the right to make all such changes without notice, including prices, colors, materials, equipment and specifications as well as the addition of new models and the discontinuance of models shown in this brochure. Therefore, please consult with your Coachmen dealer and confirm the existence of any materials, design or specifications that are material to your purchase decision. 3/16

©Copyright 2016 Coachmen RV a Division of Forest River Inc – All Rights Reserved.



Coachmen
Leader to the Great Outdoors.

423 N. Main Street • P.O. Box 30
Middlebury, IN 46540

To learn more about Coachmen RV and our products and see how Coachmen is making the easy life easier, call us toll free at **(800) 353-7383**, or visit www.coachmenrv.com