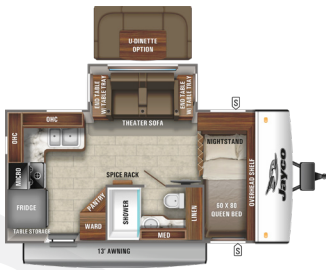


JAY FEATHER

TRAVEL TRAILERS



16RK

Ext. Lgth: 22' 4" Weight: 4,755 lbs. Hitch: 465 lbs.



X213

Ext. Lgth: 24' 3" Weight: 4,625 lbs. Hitch: 495 lbs.



22RB

Ext. Lgth: 27' 9" Weight: 5,655 lbs. Hitch: 660 lbs.



22RK

Ext. Lgth: 27' 10" Weight: 5,490 lbs. Hitch: 530 lbs.



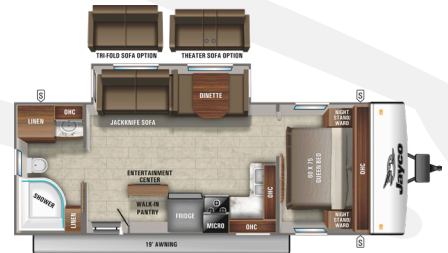
24RL

Ext. Lgth: TBD Weight: TBD Hitch: TBD



24BH

Ext. Lgth: 32' 2" Weight: 6,220 lbs. Hitch: 660 lbs.



25RB

Ext. Lgth: 30' 7" Weight: 5,850 lbs. Hitch: 630 lbs.



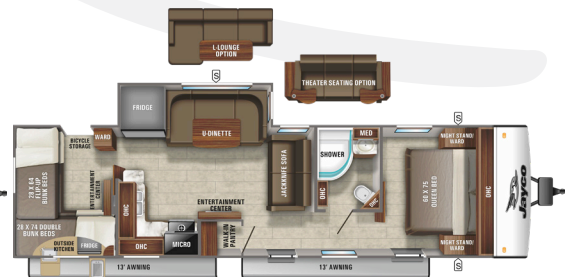
27RL

Ext. Lgth: 31' 8" Weight: 6,030 lbs. Hitch: 730 lbs.



27BHB

Ext. Lgth: 33' 1" Weight: 6,300 lbs. Hitch: 695 lbs.



30QB

Ext. Lgth: 36' 11" Weight: 7,295 lbs. Hitch: 835 lbs.

STANDARDS & OPTIONS

STANDARD EXTERIOR EQUIPMENT

Aerodynamic, rounded front profile with diamond plate
 Modern retro graphics package with two-colored sidewall
 Stronghold VBL™ vacuum-bonded, laminated floor, side, rear and slide room walls
 Keyed-Alike™ lock system
 Magnum Truss™ Roof System with one-piece seamless DiFlex II material
 American-made Norco® frame with integrated A-frame G20 tinted safety-glass windows
 Marine-grade exterior speakers with blue LED accent lighting (2)
 American-made Dexter® E-Z Lube® axles
 Galvanized steel and impact-resistant wheel wells
 Slideouts with double seals, barrier sponges and U-channel drip spout (select models)
 30-amp service
 Outside grill propane quick-connect port
 Folding assist handle on main entry doors
 Aluminum tread entry steps
 Outside camp kitchen (standard on select models)
 Battery quick disconnect
 Slide topper prep (select models with slide rooms)
 Inverter pre-wire
 Exterior TV prep with 120V electric and cable outlets

STANDARD INTERIOR EQUIPMENT

Choice of two interior design packages- Modern Farmhouse or Vintage Washed Gray
 LED lighting throughout
 Smoked glass decorative inserts (select overhead cabinets)
 Screwed and glued cabinetry
 Residential vinyl flooring with cold crack resistance
 Decorative wall clock (select models)

Plywood dinette, bunk and bed bases (applicable models)
 Ball-bearing drawer guides with 75 lb. capacity
 6 cu. ft. gas/electric refrigerator
 Residential oven with 3-burner recessed cooktop and glass cover
 Residential-style kitchen countertops
 Microwave
 Decorative backsplash
 4 in. high-density dinette cushions with vinyl backing
 Mattress with bedspread (select models)
 Jayco exclusive Teddy Bear "soft-touch" residential-style bed mats (select models)
 120V outlet and corner shelf in fixed bunks (bunk models only)
 Plastic foot flush toilet
 Bathroom skylight and roof vent

CUSTOMER VALUE PACKAGE (MANDATORY)

American-made nitro-filled Goodyear® radial tires with self-adjusting brakes
 Aluminum rims
 20 lb. propane bottles with auto regulator (2)
 13,500 BTU A/C
 Spare tire
 Detachable power cord
 Power awning with LED lights
 Black tank flush
 Outside shower
 Power tongue jack
 Manual stabilizer jacks (4)
 6 gal. gas/electric DSI water heater
 AM/FM/Bluetooth® stereo
 Side-marker camera prep
 Rear camera backup prep
 360° Siphon® roof vent cap

SPORT PACKAGE (MANDATORY)

Roof ladder
 Aluminum tread entry steps
 Enhanced graphics package
 Front molded fiberglass cap
 JaySMART™ (Safety Markers And Reverse Travel) LED lighting (patent-pending)
 Roof-mount solar prep
 Glacier Package
 24 in., 32 in. or 40 in. LED TV
 Drying rack/ sink cover
 Power roof vent (main living area)

OPTIONS

12V heated tank pads
 15,000 BTU roof-mounted A/C
 50-amp service with 2nd A/C prep (select models)
 30 lb. propane bottles with auto regulator (2) (select models)
 MORryde® StepAbove™ aluminum entry steps on main door (standard 16RK, 22RB and 24BH)
 8 cu. ft. 12V refrigerator
 New JAYCOMMAND™ "Smart RV" system (includes TPMS)
 Tri-fold sofa with table trays (select models)
 Theater seating (select models)
 U-dinette in place of theater seating (16RK)
 L-lounger sofa in place of U-dinette (22RB, 24BH)
 Booth dinette in place of theater seating (22RK)
 Heated tank pads
 Solar Power Package

FLOORPLAN	EXTERIOR TRAVEL LENGTH	EXTERIOR WIDTH	EXTERIOR HEIGHT (WITH A/C)	INTERIOR HEIGHT	UNLOADED VEHICLE WEIGHT	DRY HITCH WEIGHT	GVWR	CARGO CARRYING CAPACITY	FRESH WATER CAPACITY (INCLUDING WATER HEATER)	GRAY WASTE WATER CAPACITY	BLACK WASTE WATER CAPACITY	SLEEPING CAPACITY
16RK	22' 4"	8' 0"	10' 8"	6' 6"	4,755	465	6,000	1,245	48	30.5	30.5	2-3
X213	24' 2"	8' 0"	10' 8"	6' 6"	4,625	495	5,500	875	48	30.5	22.5	6-9
22RB	27' 9"	8' 0"	10' 8"	6' 6"	5,655	660	6,750	1,155	48	61**	22.5	2-3
22RK	27' 10"	8' 0"	10' 8"	6' 6"	5,490	530	6,750	1,260	48	61**	30.5	2
24RL	TBD	8' 0"	10' 8"	6' 6"	TBD	TBD	TBD	TBD	48	TBD	TBD	4-6
24BH	30' 2"	8' 0"	10' 8"	6' 6"	6,220	660	7,250	1,030	48	61**	30.5	7-8
25RB	30' 7"	8' 0"	10' 8"	6' 6"	5,850	630	7,000	1,150	48	61**	30.5	4-6
27RL	31' 8"	8' 0"	10' 8"	6' 6"	6,030	730	7,000	970	48	30.5	30.5	4-6
27BHB	33' 1"	8' 0"	10' 8"	6' 6"	6,300	695	7,600	1,300	48	61**	30.5	8-9
30QB	36' 11"	8' 0"	10' 8"	6' 6"	7,295	835	8,500	1,205	48	61**	30.5	8-9

Some specs at the time of print may include estimates, for the most updated information, please visit Jayco.com

**Indicates split tanks



TRAVEL WITH CONFIDENCE • NO ONE OFFERS A BETTER WARRANTY

At Jayco, we build our RVs to handle every adventure, then back them with our industry-leading 2+3 limited warranty. Our 2-year limited warranty has you covered for 2 camping seasons. That's 730 days. In addition, our 3-year structural limited warranty has you covered for 3 camping seasons or 1,095 days. You won't find a better limited warranty in the business, because the only strings that we attach are those that deliver the ultimate in reliability. That's the Jayco difference. So go explore. For a copy of our 2-year limited + 3-year limited structural warranty with complete terms and conditions, please contact your local Jayco dealer.



Scan QR code for specification definitions



Generations of family fun.

